

Augusta Charter Township

Washtenaw County, Michigan

Parks & Recreation Master Plan

2022 - 2026

Adopted December 14, 2021

Assisted by:



www.cwaplan.com

Acknowledgments

Township Board

- Brian Shelby, Supervisor
- Susan Burek, Treasurer
- Kim Gonczy, Clerk
- Linda Adams, Trustee
- Deborah Fuqua-Frey, Trustee
- David Hall, Trustee
- Chris Ortiz, Trustee

Parks Committee

- Brian Shelby, Chair
- Belynda Domas, Vice Chairperson
- Dan Woolf, Secretary
- Susan Burek, Board Liason
- Sylvia Taylor, Member

Recreation Plan Steering Committee

- Brian Shelby
- Belynda Domas
- Dan Woolf

Table of Contents

Chapter 1: Executive Summary	4	Chapter 7: Community Description.....	31
Key Plan Findings.....	4	Regional Setting	31
What The Plan Contains.....	4	Population and Housing	32
Planning Process	5	Land Use Patterns & Development Trends	35
Chapter 2: Goals & Objectives	6	Natural Features	37
Chapter 3: Action Program.....	7	Planning Initiatives.....	39
Project Schedule	9	Appendices	43
Implementation Strategies.....	11	A - Public Notices	43
Chapter 4: Needs Analysis & Public Participation	14	B - Recreation Plan Committee Recommendation ..	47
National Recreation Trends	14	C - Minutes of Public Hearing	48
Public Input	16	D - Township Board Resolution.....	52
Public Review and Public Hearing	16	E - Letters of Transmittal	54
Chapter 5: Recreation Inventory	17	F - Public Input Summary.....	56
Local Recreation Facilities	17	G - Concept Plans.....	65
Preserves and Natural Areas	19		
Trails and Linear Parks	19		
Neighboring Community Parks & Recreation.....	22		
School Facilities	23		
Regional Recreation Facilities.....	26		
Comparison to Recreation Standards.....	26		
Accessibility Assessment.....	28		
Status Of Grant Assisted Projects	28		
Chapter 6: Administrative Structure	29		
Funding & Budget.....	30		
Volunteers & Partnerships	30		

List of Maps

Map 1.	Augusta Township Rec Facilities.....	18
Map 2.	Regional Recreation Facilities.....	27
Map 3.	Existing Land Use.....	36
Map 4.	Natural Features	38

List of Figures

Figure 1.	Border-to-Border Trail.....	19
Figure 2.	Great Lake-to-Lake Trail	20
Figure 3.	Iron Belle Trail	21
Figure 4.	Organizational Chart	29
Figure 5.	Context Maps - State, County, and SEMCOG Region	31
Figure 6.	Augusta Population Trends	32
Figure 7.	Population Trends, Washtenaw County and Region	32
Figure 8.	Age Distribution Comparison.....	33
Figure 9.	Augusta Township Age Distribution ...	33
Figure 10.	Household Size Trends.....	34
Figure 11.	Existing Land Use 2020.....	35
Figure 12.	USDA Soil Survey Suitability Maps	37
Figure 13.	2020 Trail Feasibility Study	39
Figure 14.	SEMCOG Regional Non-motorized Corridors and Gaps.....	41

List of Tables

Table 1.	Input Participation.....	5
Table 2.	Improvement Schedule	9
Table 3.	Top Sports Activities - 2020.....	14
Table 4.	Top Outdoor Recreation Activities in Michigan	14
Table 5.	Outdoor Recreation Activities - Children under 18	15
Table 6.	Regional Recreation Facilities.....	24
Table 7.	Comparison to Suggested Parkland Acreage Standards	26
Table 8.	Population Projections, Augusta Township Area	32
Table 9.	Historical Population Data.....	32
Table 10.	Median Age.....	33
Table 11.	Augusta Township Age Ranges	33
Table 12.	Household Characteristics.....	34
Table 13.	Household Size	34
Table 14.	Components of Population Change	34
Table 15.	Housing Stock	35

Chapter 1: Executive Summary

The Augusta Township Parks and Recreation Master Plan articulates a vision for parks and recreation in the community. The purpose of this Plan is to guide recreation planning and development efforts of Augusta Township over the next five years. Once adopted, the Plan is the official document to be used by the community to guide decisions regarding parks and recreation.

This document is the first recreation plan for Augusta Township. As the community continues to grow and evolve, setting aside land for recreation and land preservation purposes becomes more important. This plan is a first critical step towards identifying the priorities of Augusta Township residents, and will act as a guidepost for community development in the coming years.

Key Plan Findings

Augusta Township residents are proud of their home and want to keep the rural feel of the community intact. While there is definitely interest in developing parks and other recreation amenities in the Township, preservation of natural features is much more important than active-use ball fields. Acquisition of large, undeveloped parcels for use as nature preserves would be appropriate, with nonintrusive features such as walking paths, benches, and possibly picnic shelters and/or play equipment would be the preferred approach.

Input from residents suggest that there is a willingness to pay for recreation development through a millage. Supplemental funding through grants or donations will be critical, however, and any millage proposals must be introduced carefully and with a clear project objective.

What The Plan Contains

The Augusta Township Parks & Recreation Master Plan follows the format suggested by the Michigan Department of Natural Resources (MDNR) in the Guidelines for the Development of Community Park, Recreation, Open Space, and Greenway Plans (2009, rev. 2018).

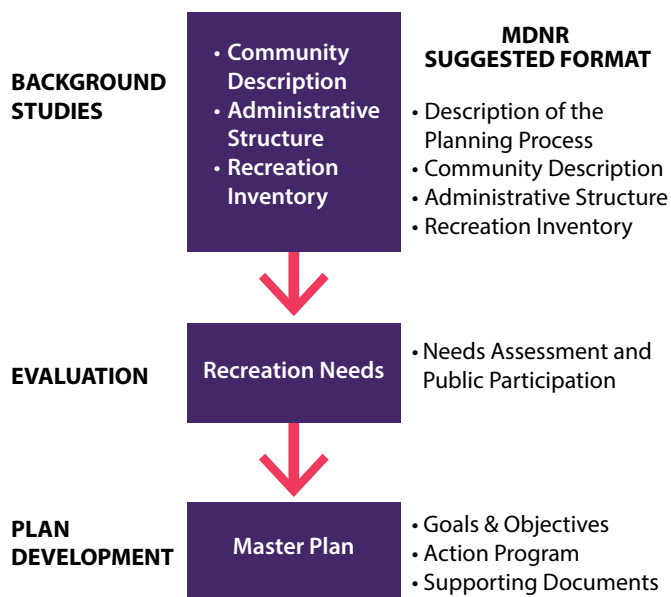
- This plan begins with Augusta Township's **Goals and Objectives** which outline the overarching desires for Augusta's parks and recreation facilities.
- The **Action Program** chapter outlines an action plan and strategies for implementation.
- The **Public Participation** portion of the plan presents the input received from local officials, staff, and residents. This information helped in formulating the Goals & Objectives and Action Plans.
- **Recreation Inventory** describes the existing parks and recreational facilities of the community as well as those of the state and the region located nearby.
- The **Administrative Structure** chapter includes a description of how parks and recreation services are administered in Augusta Township, including budget and funding information.
- The **Community Description** chapter provides a summary of both the social and physical characteristics of the community.
- Finally, supporting documents including the resolutions and notices documenting the plan's adoption by Township Board, are included in the appendices to the plan.

Planning Process

The process used to draft the Plan consists of three phases: background studies, evaluation, and plan development. Each is described more fully below:

- **Background Studies.** This phase involved gathering and updating data from the U.S. Census, existing documents and plans, and from field observations. The data is organized into three main categories: *community description*, *administrative structure*, and *recreation inventory*.
- **Evaluation.** The second phase in the planning process evaluated and analyzed the data compiled to determine recreation facility deficiencies and needs. Public input to assess recreational needs was also sought at this level. A written survey and a public hearing were conducted to receive residents' opinions and ideas for the park and recreation system. Input from Township officials and members of the Parks Committee were also used.
- **Plan Development.** The last phase in the process involves Plan development and adoption. Based on the deficiencies and needs, goals and objectives were formulated and a specific action plan developed. Strategies to implement the Plan were also discussed.

The following diagram illustrates the planning process and how it corresponds to the MDNR suggested format described earlier:



Augusta Township recognizes the importance of public participation in the recreation planning process. This Master plan was developed with input from Township officials, staff, community stakeholders, and residents. The Township conducted an online survey from September 14 to October 17, 2021. The Plan was approved by the Master Plan Steering Committee on October 29, 2021. Finally, the Plan was subject to a public hearing following the 30-day public comment period, and prior to the Township Board adoption on December 14, 2021.

Table 1. Input Participation

Participants	Rec. Inventory, Resource Inventory, & Community Description	Public Input	Goal Formulation	Action Program	Public Hearing	Plan Adoption
Township Board		√			√	√
Recreation Plan Steering Committee	√	√	√	√	√	
Township Residents		√	√		√	

Chapter 2: Goals & Objectives

To provide a guideline for decision-making, the Recreation Plan Steering Committee has developed a set of comprehensive goals and objectives. The following goals and objectives are intended to provide an operational framework for future decisions related to the provision of parks and recreation for Augusta Township. These goals and strategies should be reviewed continually and modified as necessary.

GOALS

Augusta Township should provide outdoor recreational opportunities for persons of all ages and all abilities that are well-maintained and safe.

Augusta Township should consider the future needs of the community and take actions to dedicate parkland in order to meet current as well as future recreational needs of the community.

OBJECTIVES

1. Non-Motorized Transportation Network Development

Develop an interconnected network of pedestrian and bicycle facilities to make it safer and easier for more people to bicycle and walk through Augusta Township:

- Provide safe travel to key destinations including residential areas, schools, recreation areas and parks, and connections to trail systems in adjacent communities;
- Select road corridors that would be feasible for the development of non-motorized pathways;
- Provide a well-defined separation of pedestrians, bicycles, and cars on arterial roads with the use of designated non-motorized transportation facilities including off-the-road shared use pathways, on-the-road bike lanes, or other types of pedestrian or bicycle facilities;
- Ensure a balance of facilities to accommodate all users;
- Coordinate the provision of non-motorized transportation facilities with the WATS and the Washtenaw County Road Commission during road improvement work;
- Work with County agencies, utility companies, and neighboring communities on joint funding opportunities for non-motorized pathway development;

2. Recreation Facility Development

- Evaluate opportunities for park development in the Township. Potential acquisitions should be able to accommodate a variety of uses, and be developed in a fashion that does not negatively affect the character of the surrounding community.
- Evaluate opportunities for land preservation with a focus on preserving and protecting high quality natural areas, local rural and scenic open spaces, and land that may provide linkages and opportunities for non-motorized pathway development.

3. Services Coordination

Work to coordinate recreation programming with adjacent communities and other agencies:

- Work with state and county agencies and coordinate with Ypsilanti Township Parks & Recreation, private recreation providers, and other community organizations to develop recreation programs that respond to Augusta Township residents needs.
- Work with the local police Department to encourage education and enforcement of pedestrian, bicycle, and vehicular laws

4. Administration, Funding, And Implementation

Empower the Augusta Township Parks Committee to oversee the implementation of this Recreation Plan, to coordinate efforts with adjacent communities, county agencies, and others, and to build community support for recreation facility and non-motorized pathway development.

Chapter 3: Action Program

The action program details the manner in which the goals and objectives will be met. It includes a list of specific projects as well as a schedule with suggested capital improvement projects, timeframe and strategies for implementation.

ACTION PLAN

The following outlines the list of specific projects and actions which are recommended for the next five years. A preliminary non-motorized pathway plan showing the proposed improvements is also included on Figure 13.

1. Develop a Non-Motorized Transportation Network in Augusta Township

- In coordination with the Lincoln Consolidated School District, implement the recommendations provided in the 2020 Augusta Township Trail Feasibility Study;
- Develop a Township-wide Non-Motorized plan with a focus on connections to adjacent community and regional trail networks; and
- Provide safe crossings, installation of signs and maps, and pedestrian amenities such as benches, dog waste facilities, and drinking fountains where possible along the trail.

Justification: This action is a significant need identified by the Community Survey and responds to national and regional trends.

2. Develop the Willis Road Preserve

- Develop the Township-owned property on Willis Road as a nature preserve. Actions and amenities to consider include:
 - Cleanup and removal of invasive species;
 - Development of a rustic walking trail;
 - Addition of a small parking area; and
 - Signage
- Evaluate opportunities to expand the preserve site through adjacent property acquisition, and develop a connector trail to the school campus to the west.

Justification: This action was identified by the Trail Feasibility and responds to national and regional trends.

3. Develop Augusta Township's First Park

- Evaluate existing Township-owned properties and/or acquire other land for development of a mixed-use park facility. Desired properties would include enough room for a variety of active and passive recreation uses such as sports fields, specialized recreational uses, walking paths and picnic areas. Properties contiguous to existing parks and open spaces are also desirable. The property should be located near population centers, have high visibility, and should be able to accommodate:
 - Parking;
 - Play equipment;
 - Picnic pavilion;
 - Veterans memorial;
 - Walking/jogging trails; and
 - Other amenities as space allows.

It will be important to work with the Township Board and the Planning Commission to ensure parkland needs are considered in the review of new developments and to encourage or develop regulations for developers to set aside land for park facilities. It will also be important to work with Washtenaw County, area land conservancies, and other organizations.

Justification: This action responds to trends related to the demographic and physical characteristics of the area.

4. Administration, finance and maintenance

- Facilitate communication and partnerships to promote the shared use of the area's parks and recreation resources including the state, schools, land conservancies and private recreation providers as well as the Township facilities by community groups.
- A means of generating operational costs and revenues where possible should be pursued to support the development projects mentioned above and to maintain the new facilities to a high quality standard.
- Seeking grants and support must be done aggressively. The Augusta Township Parks Committee must continue to promote and advocate the social, economic and environmental value and benefits of parks and recreation by reaching out to the community and the region.

Justification: This action is recommended to implement the current master plan.

Project Schedule

Table 2 lists individual projects along with specific tasks to be accomplished, the objective the task refers to, a rough cost estimate, and potential funding sources. In addition, the projects are listed with a time frame for completion. Short-term (ST) projects are recommended for completion within one to two years while long-term (LT) projects may take longer to be completed, within five years or longer. Mid term (MT) projects fall in between, from two to four years.

Table 2. Improvement Schedule

Description	Cost Estimate	Funding Source*	Time Frame
Non-Motorized Transportation Network			
Apply for grants and conduct fundraising for trail development.	-	-	OG
In cooperation with the Lincoln Community Schools, construct segments of the trail network identified in the 2020 Trail Feasibility Study.	see below for individual segments	GF, G, D	ST - LT
• Priority 1: Willis Road from Whittaker to Railsplitter Drive	\$437,000 - \$911,000	GF, G, D	LT
• Priority 2: Willis Road from Whittaker to Preserve	\$160,000 - \$245,000	GF, G, D	LT
• Priority 3: Railsplitter Drive/Lincoln Trail	\$385,000 - \$735,000	GF, G, D	ST
• Priority 4: Lincoln Pines subdivision to Railsplitter Drive	\$23,000 - \$35,000	GF, G, D	ST
Develop community-wide trail feasibility study for long-term planning purposes	TBD	GF, G	LT
Willis Preserve			
Apply for grants and conduct fundraising for preserve development	-	-	OG
Site cleanup & invasive species removal	To be determined	GF, G, D	ST
Prep trail (mowed/raked rustic surface)	To be determined	GF, G, D, V	ST
Construct gravel parking lot	\$10,000 - \$20,000	GF, G, D, V	ST
Install signage	\$500 - \$1,000	GF, G, D, V	ST
Evaluate opportunities to purchase adjacent property	To be determined	GF, G, D	LT
Upgrade internal mowed paths to crushed limestone surface	To be determined	GF, G, D, V	LT

GF = General Fund and/or Millage Dollars, if passed, G = Grant, D = Donation, V = Volunteer

OG = Ongoing, ST = Short Term, MT = Medium Term, LT = Long Term

Table 2. (continued) Improvement Schedule

Description	Cost Estimate	Funding Source*	Time Frame
Augusta Township Park / Parkland Acquisition			
Apply for grants and conduct fundraising for playground acquisition and development	-	-	OG
Consider parkland acquisition to provide active recreation use and rural, historic, and educational opportunities	-	-	OG
Work with the Township Board and Planning Commission to review development proposals and encourage developers to set aside open space, parkland, and trails	-	-	OG
Seek partnerships with the State of Michigan, Washtenaw County, area land conservancies, and others for parkland acquisition, development, and management	-	-	OG
Once a suitable property is acquired, develop the Township's first park to include the following amenities:	\$600	GF, G, D	-
• Parking lot (cost varies depending on number of spaces)	\$3,000/space	GF, G, D	ST
• Play equipment	\$50,000 - \$100,000	GF, G, D, V	ST
• Picnic pavilion	\$20,000 - \$40,000	GF, G, D, V	ST
• Veterans Memorial	To be determined	GF, G, D, V	MT
• Walking/hiking/biking trails, asphalt (cost varies depending on length and width of trail)	\$100 - \$200 per lineal foot	GF, G, D, V	MT
Administration, Finance, and Maintenance			
Create a committee to meet with MDNR, Washtenaw County, Lincoln Consolidated Schools, land conservancies, and local groups to consider opportunities for shared services and facilities.	-	V	OG
Identify fund raising opportunities and potential grant seeking opportunities as an on-going task	-	V	OG
Maintain and develop volunteer opportunities	-	V	OG
Attract sponsors and donations for installing benches, trash receptacles, mile markers and signs in parks or along the trails	-	GF, G, D, V	OG
Continuously advocate and promote parks and recreation to the community	-	-	OG
Consider a millage for acquisition, development, and maintenance of parks, preserves, and trails in the Township.	-	-	ST

GF = General Fund and/or Millage Dollars, if passed, G = Grant, D = Donation, V = Volunteer

OG = Ongoing, ST = Short Term, MT = Medium Term, LT = Long Term

Implementation Strategies

In order to accomplish the recommended actions during the next five years, it will be necessary to secure adequate funding. The current budget provides only a limited amount of funds for park development and improvements. The amount is well short of the projected expenses involved in the project schedule. Therefore, the following strategies are recommended to proceed as planned.

Apply for Federal Funding

At the federal level, the Michigan Department of Transportation (MDOT) funds **Transportation Enhancements (TE)** activities for community-based projects that expand travel choices and enhance the transportation experience by improving the cultural, historic, aesthetic, and environmental aspects of the transportation infrastructure. To be eligible, a project must fall into one of the TE activities. Activities which may apply to the Township include:

- Provision of facilities for pedestrians and bicycles such as walkways, curb ramps, bike parking, off-road trails, bike and pedestrian bridges and underpasses;
- Educational programs for pedestrians and bicyclists designed to encourage walking and bicycling by providing potential users with education and safety instruction through classes, pamphlets, and signage; and
- Preservation, conversion, and use of abandoned railway corridors for acquisition, development, planning, design, and construction of multi-use trails, as well as purchasing unused railroad property for reuse.

A minimum 20 percent local match is required for proposed projects and applications are accepted online on an on-going basis.

Apply for State Funding

At the state level, the **Land and Water Conservation Fund (LWCF)** and the **Michigan Natural Resources Trust Fund (MNRTF)** continue to be the primary funding sources for parkland acquisition and development.

The MNRTF provides funding for the purchase and development of parkland for natural resource based preservation and recreation. Goals of the program are to:

- Protect natural resources and provide for their access, public use and enjoyment;
- Provide public access to Michigan's water bodies, particularly the Great Lakes and facilitate their recreation use;

- Meet regional, county and community needs for outdoor recreation opportunities;
- Improve the opportunities for outdoor recreation in urban areas; and
- Stimulate Michigan's economy through recreation related tourism and community revitalization.

Grant proposals must include a local match of at least 25 percent of the total project cost. There is no minimum or maximum for acquisition projects. For development projects, the minimum funding request is \$15,000 and the maximum is \$300,000. Applications are due in April and August for acquisition projects and April (only) for development projects.

The LWCF is a federal appropriation to the National Park Service, who distributes funds to the Michigan Department of Natural Resources and Environment for development of outdoor recreation facilities. The focus of the program has been on trailway systems and other community recreation needs such as playgrounds, picnic areas, skate parks, ball fields, soccer fields and walking paths. Minimum grant requests are \$30,000 and maximum grant requests are \$500,000. The match percentage must be 50 percent of the total project cost. Applications are accepted throughout the year, but must be in by April 1 to be considered for the following years grant funds.

The **Recreation Passport** grant program offers funding for the development of public recreation facilities for local units of government. Minimum grant requests are \$7,500 and maximum requests are \$150,000. The local match obligation is 25 percent of the total project cost. Application are due on April 1st.

Local units of government may use the Forest Stewardship program to develop a management plan for a municipal forest which would include a component targeting outreach to private landowners. A total of \$2,000 may be granted with a 50 percent local match. Applications are due in September. Non-game Wildlife Fund Grants have also been offered in the past to identify, protect, manage, and restore native plant and animal species, natural communities, and other natural features.

Apply for Other Grant Funding

The **Washtenaw Coordinated Funders**, a collaboration of the Office of Community & Economic Development (representing the City of Ann Arbor, Washtenaw County, and Washtenaw Urban County), the United Way of Washtenaw County, the Ann Arbor Area Community Foundation, and the RNR Foundation, offers funding for program operations and capacity building grants for projects involving Aging, Housing & Homelessness, Safety-Net Health & Nutrition, and Cradle to Career – including both Early Childhood & School-Age Youth.

The **Washtenaw County Parks and Recreation Commission** does not have a formal dedicated fund to allow distribution of grants, but it does partner with communities on a case-by-case basis to assist with development of parks and/or non-motorized trail facilities. Their **Connecting Communities Program**, dedicated to the development of regional non-motorized trail facilities, was re-instituted in 2017 and offers funding for a variety of initiatives including trail development. Funding from the program is provided via the four-year Road and Trails Millage which was renewed in 2020, meaning the program will remain active through at least 2024.

Local units of government may use the **Forest Stewardship program** to develop a management plan for a municipal forest which would include a component targeting outreach to private landowners. A total of \$2,000 may be granted with a 50 percent local match. Applications are due in September. Non-game Wildlife Fund Grants have also been offered in the past to identify, protect, manage, and restore native plant and animal species, natural communities, and other natural features.

The **Detroit Edison Tree Planting program** may be a source of funding. The Program began as DTE joined the US Department of Energy's voluntary Climate Challenge Program to address greenhouse gas emissions. Cost-share funds are available to municipalities in the Detroit Edison's service area on a competitive basis for tree planting projects. A total of up to \$4,000 may be granted to eligible tree planting projects on public and school property with a 50 percent local match. Applications are typically due in February.

Non-game Wildlife Fund Grants have also been offered in the past to identify, protect, manage and restore native plant and animal species, natural communities and other natural features.

There are also a variety of smaller grant programs available for the establishment of greenways/pathways or greenway-related facilities such as **Bikes Belong Coalition**. The Bikes Belong Coalition is sponsored by members of the American Bicycle Industry. Their mission is to put more people on bikes more often. The program funds projects in three categories: Facility, Education and Capacity Building. Requests for funding can be up to \$10,000 for projects such as bike paths, trails, lanes, parking, and safe routes to school. Applications are reviewed on a quarterly basis.

Access to Recreation is a grant program available for universal access of people of all abilities to a wide variety of recreation opportunities, such as nature viewing and photography areas, hiking trails, scenic outlooks, waterfalls and water activities of all kinds, beaches, fishing and boating, playgrounds, picnic areas, campgrounds, and much more. There are two primary grant programs under this source of funding:

- **Recreation Access Matching Grant** provides up to 50 percent matching funds (up to \$10,000) for the purchase of universally accessible recreation equipment and materials such as all terrain hiking wheelchairs, pool lifts, accessible playground surface, transfer systems, beach access mats, trail surface enhancements, and accessible picnic tables that enhance recreation participation by people with disabilities; and
- **Accessible by Design Awards** is designed to stimulate the development of creative universally designed recreation experiences that invite, welcome, and support the inclusion of people of all abilities. Winning designs demonstrate how going above and beyond the minimum requirements of the Americans with Disabilities Act can create greater access and usability for people of all abilities in the community. Winning designs are awarded cash prizes to build the projects up to \$250,000 with 25 percent minimum match.

Increase Support for Parks

Public support for parks and recreation is crucial in determining the level of services Augusta Township will be able to provide in the future. A specific project millage over a limited period could be considered in the future for specific capital expenditures such as a park acquisition or development project.

Seek Other Sources of Funding

Augusta Township Board of Trustees should continue to investigate additional sources of funding. Seeking donations, attracting sponsors, holding fund-raising events and seeking out other revenue sources are methods that should be pursued aggressively to raise funding for park acquisition and development.

Chapter 4: Needs Analysis & Public Participation

An essential task in the recreation planning process is to determine the needs of the community as a basis for an action plan to improve the parks system. Needs provide the rationale for the formulation of goals and objectives as well as identify areas for capital improvements. To assess needs, consideration was given to current recreation trends an on-line survey was made available to Augusta Township residents. The opinions focused on identifying priorities for park development in the future.

National Recreation Trends

Recreation trends on a national and regional level provide insights into activities that show the greatest growth in popularity and may affect the future direction of parks and recreation. The National Sporting Goods Association (NSGA) regularly conducts national surveys to measure participation in physical activities and track changes from previous years. Table 3 lists the top seven outdoor activities persons aged seven years and older participated in at least once in 2020.

The 2020 study shows declines in most sectors of the sporting industry. Fitness Activities across the board showed steady growth, driven by exercise walking and running. Outdoor activities showed a small decline overall, but hiking showed over a 20% increase over the past decade. Team related sports, with the exception

of soccer and lacrosse, have showed a steady decline in popularity in recent years, while trail related sports continue to grow in popularity. The top growing activities between 2010 and 2019 were kayaking (5.6 to 10.7 million, 47.7%) yoga (20.2 to 31.8 million, 36.5%), running/jogging (35.5 to 46 million, 22.8%), hiking (37.7 to 48.1 million, 21.6%) and pickleball (1.7 to 2.1 million, 19.1%).

Table 3. Top Sports Activities - 2020

Activity	Participation, National (in millions)	Overall Rank	Participation (East North Central Region)	Rank*
Exercise walking	106.1m	1	16.4m	1
Exercise w/ Equipment	56.5m	2	8.1m	2
Hiking	46.4m	3	6.2m	6
Swimming	47.1m	4	6.4m	5
Aerobic Exercising	46.2m	5	7.3m	3
Running/Jogging	44.2m	6	6.0m	7
Camping	40.7m	7	5.9m	9
Work Out At Club	37.6m	8	5.2m	10
Bicycle Riding	37.1m	9	6.0m	8
Weight Lifting	36.5m	10	5.2m	11

Source: NSGA Sports Participation in the United States 2020

* Other rankings for East North Central Region include Bowling #4, 6.5m

Table 4. Top Outdoor Recreation Activities in Michigan

Activity	Participation Rate
Relaxing outdoors	75%
Walking outdoors, including dog walking	74%
Visit parks or playgrounds	67%
Sightseeing and/or driving for pleasure	64%
Visiting nature centers or historic sites	56%
Swimming outdoors	54%
Picnicking	53%
Fishing	41%
Biking of any kind (on or off road)	40%
Camping of any kind (modern, RV, tent, rustic)	39%
Team or individual sports outdoors	37%
Wildlife viewing and/or photography including birding	36%
Hiking/backpacking	34%
Jogging/running	34%
Canoeing, kayaking, stand-up paddle boarding, or wind surfing	32%
Road biking	31%
Motor boating	31%
Sledding/tubing	30%
Tent or rustic camping	30%
Shooting sports, including archery	30%
Modern or RV camping	25%
Hunting of any kind	20%

Source: Michigan Comprehensive Outdoor Recreation Plan

Table 5. Outdoor Recreation Activities - Children under 18

Activity	Participation Rate
Visit parks or playgrounds	85%
Swimming outdoors	76%
Sledding/tubing	54%
Fishing	52%
Non-league team or individual sports	46%
Team or individual sports in a league	44%
Road biking	41%

Source: Michigan Comprehensive Outdoor Recreation Plan

These trends are consistent with trends observed in Michigan. According to a survey of Michigan residents conducted as part of the 2018-2022 Michigan Comprehensive Outdoor Recreation Plan, walking outdoors was identified as the most important outdoor activity by 26 percent of users statewide. A list of participation rates for the most popular activities is listed in Table 4 below. Participation rates for children under age 18 is provided in Table 5 on page 15.

Some key findings include:

- Nearly 75 percent of residents feel that outdoor recreation is very important or moderately important to their household.
- Walking outdoors, including dog walking, was identified as the most important outdoor activity.
- 87 percent of participants went outside 52 or more days per year, with nearly 54 percent doing so for more than 100 days.



These national trends are consistent with trends in Michigan. According to a telephone survey of Michigan residents conducted as part of the 2013-2017 Michigan Statewide Comprehensive Outdoor Recreation Plan, the top 10 outdoor recreation activities are: biking (all types), camping, fishing, walking outdoors (including dog walking), hiking (all types), playing outdoor games/sports, hunting or trapping, swimming (all types), boating, and visiting playgrounds.

The National Recreation and Park Association (NRPA) and the American Academy for Park and Recreation Administration have published a list of future trends compiled from different sources that will influence the direction of recreation planning and programming. These trends include increases in:

- Environmentally sensitive lifestyles, natural area management, and water quality protection
- Concerns for personal and family security, in the importance for wellness activities, and a desire to preserve and maintain cultural heritage
- Public costs, in the provision of leisure services through the public and private sectors and partnerships, a greater recognition of the economic value of parks and open spaces
- Senior citizens and number of smaller households

Monitoring parks and recreation trends is important in determining how parks and recreation services should evolve. The implication of the trends noted above along with the demographic and physical characteristics of the area can be summarized as follows:

- As population increases, demand for recreation will likely increase;
- Recreation facilities and programs should respond to the expected increase of seniors;
- There is and will continue to be a demand for more linear parks, trails, and pathways for recreation and non-motorized transportation;
- With the increased popularity of exercise walking and fitness related activities, there will continue to be an increased importance on recreation contributing to walkable, livable, and sustainable communities; and
- The continued collaboration and partnerships between public, private, and non-profit agencies as well as with adjacent local municipalities for the provision of parks and recreation programs and facilities will be critical to help meet Augusta's recreation requirements.

Public Input

An online survey was made available for public input beginning on September 14 and ran through October 17, 2021. A notice was published on the Township's website (Appendix A) and flyers posted at the Township Offices.

A total of 141 unique responses were received in the survey. The full set of responses is available in Appendix F beginning on page 56.

Participants indicated a general desire to see parks and trails developed within the Township, with 56% in favor of acquiring land for a new park, and 60% in favor of developing a trail system. Protection of natural resources was considered of key importance by the respondents, with 88% considering protection "important" or "very important".

Access to paths and trails was considered important by 64% of survey participants. 62% indicated that they regularly participate in walking and trail sports, and 43% cycled on a regular basis. The top three requested park amenities were rustic walking paths (79%), paved multi-use paths (70%), and natural areas (58%). These results combined with the importance of protecting natural areas suggest that acquiring large undeveloped parcels and incorporating low-impact design elements such as trails, pavilions, and small-scale play areas may be appropriate.

There appears to be little desire for sports fields or other active-use facilities. Only 37% felt access to active-use amenities was important and only 31% regularly participate in field sports. Basketball courts, the most popular active-use amenity requested by participants, was 18th out of 36 and was requested by only 21% of respondents.

36% of survey participants felt that programming, i.e. special events, classes, sports leagues, and the like, were important recreation options, and 27% took advantage of programming offered by Washtenaw County and other providers. The lack of participation could be attributed to lack of available options, however. 61% of respondents were in favor of partnering with Washtenaw County Parks and Recreation to bring classes closer to home. Nature education classes was the most popular programming option.

The survey also suggested a willingness to fund park and trail development through a millage. 57% of participants indicated they would support a millage at some level, with the most popular option being 0.5 mill.

PUBLIC REVIEW & PUBLIC HEARING

After the Steering Committee and Park Committee considered the input received through the survey, and reviewed recreation trends, deficiencies, and other background information, they established the Recreation Plan's goals, objectives, and an action program for implementation. A draft Plan was then prepared and made available for public review beginning on November 1, 2021. Copies were made available online and at the Township Offices. The plan's availability was posted in MLive (Appendix A). Following public review, the Steering Committee approved the draft Plan and recommended its adoption by Township Board at a meeting held on December 1, 2021 (Appendix B). The public input into the plan culminated in an advertised public hearing held on December 14, 2021 (Appendix C). After the hearing, the Township Board adopted the plan (Appendix D).

The parks and recreation issues considered by the Parks and Recreation Committee are summarized into the following main themes:

1. Preservation of natural resources;
2. Park acquisition and development; and
3. Trail development.

These issues served to formulate the goals and objectives of the Augusta Township Parks and Recreation Master Plan.

Chapter 5: Recreation Inventory

Augusta Township does not currently contain any Township-owned recreation properties. Residents do have good access to County-owned facilities, private preserves, and parks and trails in surrounding communities. This section describes the local and regional recreational resources located in and around Augusta. The information provided in this section was derived from a variety of sources including the information from the Washtenaw County Parks and Recreation Commission, the City of Milan, Ypsilanti Township, internet research, and a field survey conducted in the fall of 2021.

LOCAL RECREATION FACILITIES

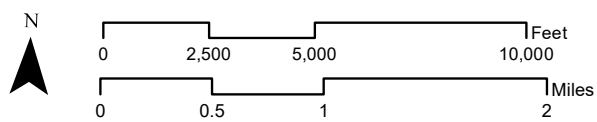
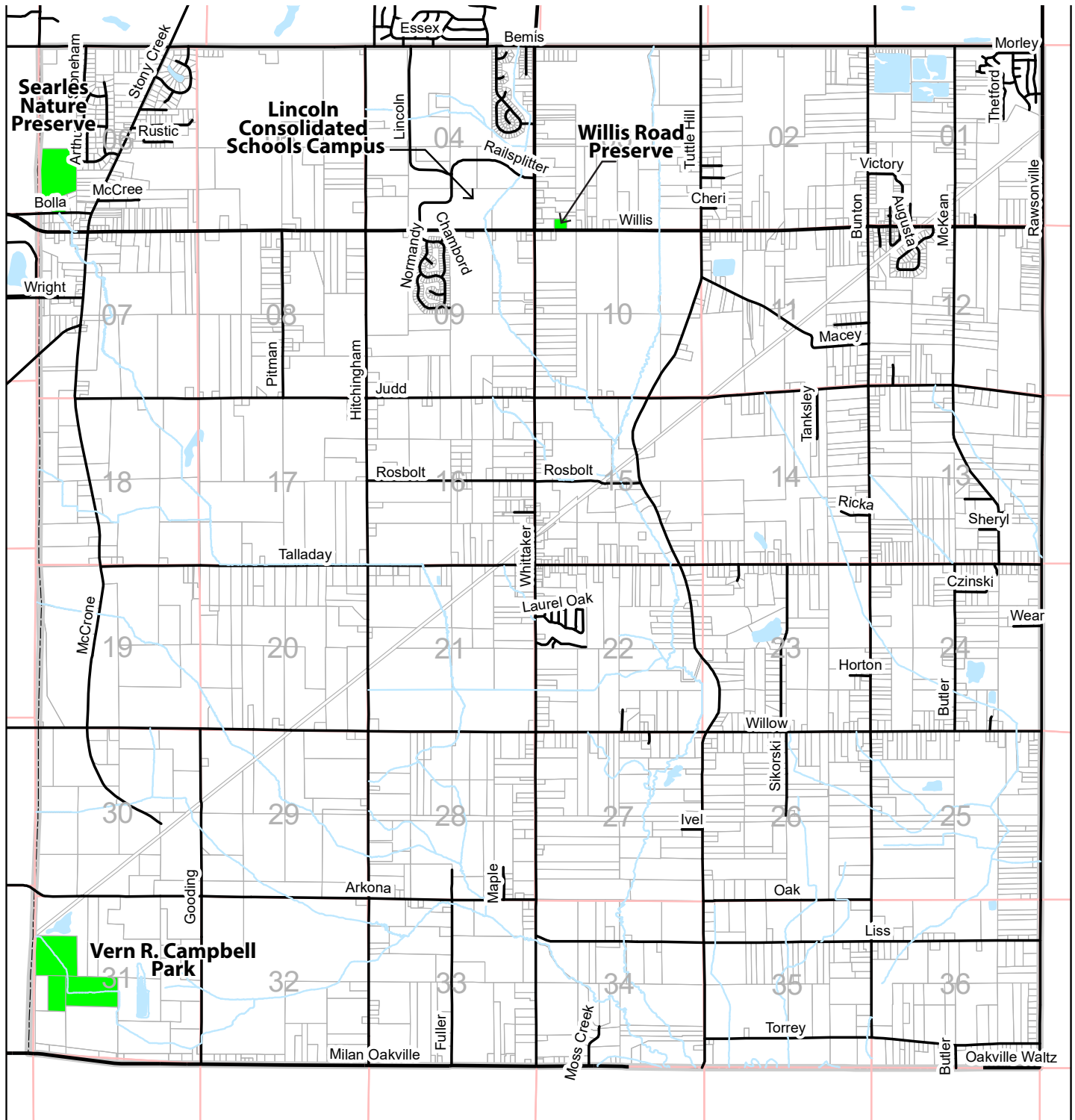
WILLIS ROAD PARCEL

Augusta Township owns an undeveloped 3.3 acre property approximately 600 feet east of Whittaker Road and the Lincoln Consolidated Schools campus. The parcel is heavily wooded, and bounded to the north and west by the John Bird Drain. According to the USDA Web Soil Survey, roughly 85% of the parcel consists of Gilford sandy loam, with a hydrology that severely restricts recreation development. The parcel would work well as a nature preserve, and if a pathway could be developed between the preserve and the school campus, could serve as an educational destination. The parcel has limited potential for development beyond simple rustic trails.



Table of Contents	Executive Summary	Goals & Objectives	Action Plan	Needs Assessment & Public Participation	Recreation Inventory	Administrative Structure	Community Description
-------------------	-------------------	--------------------	-------------	---	----------------------	--------------------------	-----------------------

Map 1. Recreation Facilities and Service Area



Park or preserve

Augusta Township Recreation Facilities

Preserves and Natural Areas

The 48-acre *Searles Nature Preserve*, located in the northwestern corner of the Township, is home to the headwaters of Stony Creek. Owned and maintained by the Washtenaw Chapter of the Michigan Audubon Society, the preserve is open to the public for hiking and nature viewing, and contains several high-quality sections of woodland. The preserve is popular with bird watchers, with over 72 species reported on site.



Figure 1. Border-to-Border (B2B) Trail



Trails & Linear Parks

Augusta Township completed a Trail Feasibility Study in 2020 to evaluate opportunities for trail development in the community. The study focused on connecting the Willis Road Parcel to the Lincoln Consolidated School District, with links to the Ypsilanti Township trail system just north of the Township border. While Augusta and the Lincoln Consolidated School District are still in the very early stages of negotiations, discussions have been encouraging and suggest the potential for future partnerships between the Schools and Township. Trail development remains a priority for the Township and will be key to recreation development overall.

The Township also sits just south of the starting point of Washtenaw County’s *Border-to-Border Trail (B2B)*, a 35-mile long paved pathway running north-northwest from Ypsilanti Township to the Waterloo Recreation Area, and connecting Ypsilanti, Ann Arbor, Dexter, and Chelsea along the way. The B2B also connects with the *Mike Levine Lakelands Trail State Park (MLLT)*, one of five linear state parks constructed along abandoned rail corridors in the Michigan state park system. The trail includes seven trailheads and travels from the City of Jackson east to Hamburg Township.

Table of Contents
Executive Summary
Goals & Objectives
Action Plan
Needs Assessment & Public Participation
Recreation Inventory
Administrative Structure
Community Description

The B2B and MLLT are key components of even larger trail systems. The **Great Lake-to-Lake Trail (GLLT)** stretches from South Haven to Port Huron. Originally envisioned as a single trail, the GLLT concept has expanded to include four additional routes in both the Lower and Upper Peninsulas. Route 1 is the longest of the alignments, and incorporates nineteen regional systems spanning 315 miles. The trail is roughly 75% complete.

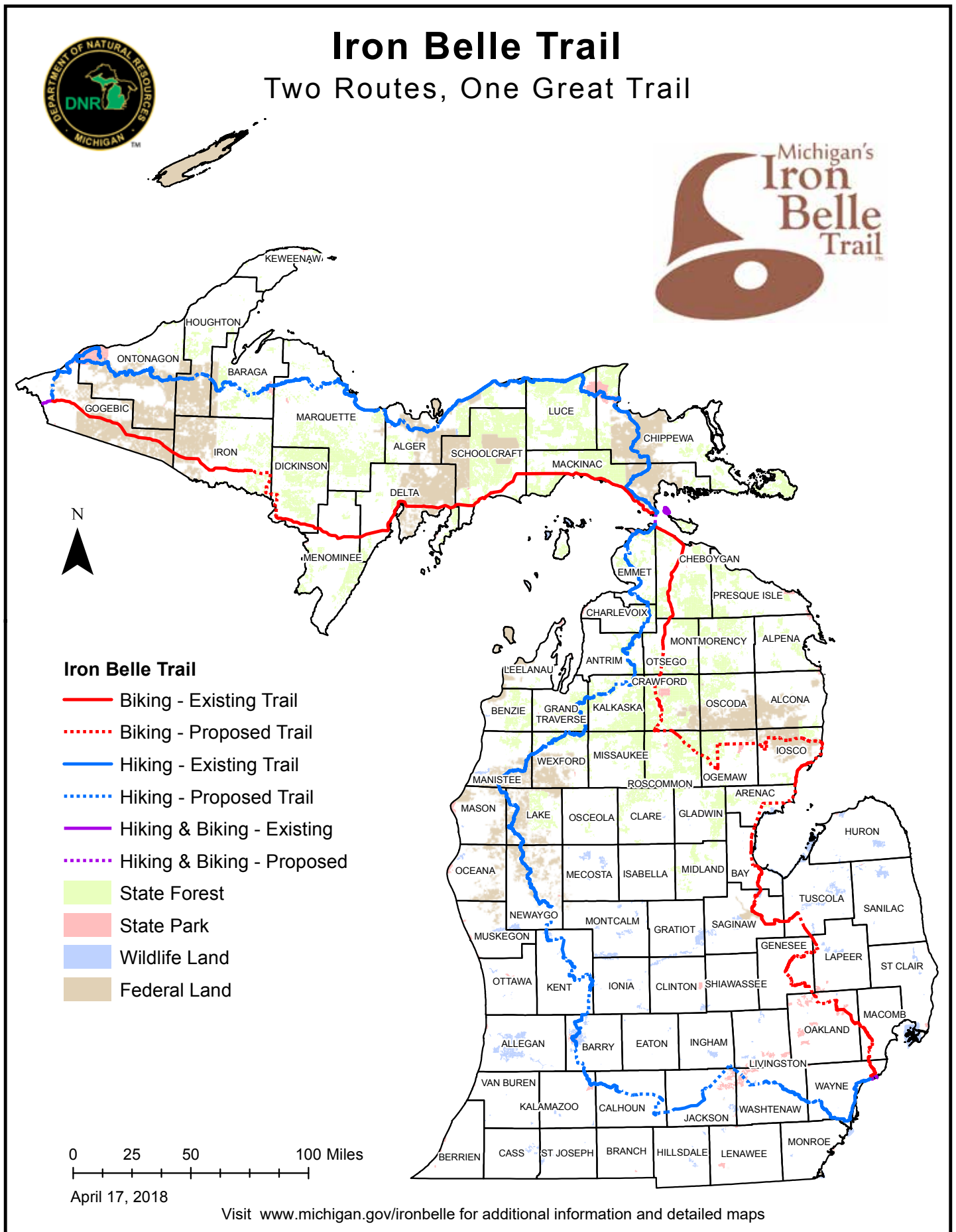
The MLLT/GLLT merges with the **Iron Belle Trail (IBT)** in Stockbridge. The IBT is a 2,000+ mile route running from Belle Isle in Detroit to Ironwood in the far western Upper Peninsula. First announced in 2012, the IBT is the longest designated state trail in the United States. The IBT will provide a 1,273 mile biking and 791 mile hiking route winding from Belle Isle in Detroit to Ironwood in the far northwest corner of the Upper Peninsula. The trail takes advantage of existing multi-use trail systems, and fills gaps between communities where needed.

The IBT is an important leg in the **North Country Trail**, the 4,600 mile trail system which spans from eastern New York to central North Dakota. Michigan's section of the trail will be the longest in the North Country system. The Michigan Department of Transportation (MDOT) maintains the bike trail along US-2 in the Upper Peninsula, while the Michigan Department of Natural Resources (MDNR) and local municipalities are responsible for the bike sections in the Lower Peninsula.

Figure 2. Great Lake-to-Lake Trail



Figure 3. Iron Belle Trail



Neighboring Community Parks & Recreation

Augusta's neighbors in Washtenaw County offer a wide variety of recreation options. The **City of Milan** owns and operates six parks and a senior and community center. **Vern R. Campbell Park** straddles the York Township/Augusta Township border; approximately 60 percent of the park's 165 acres are situated in section 31 on Augusta's southwest side. The park includes equestrian facilities to the north, soccer facilities in the central portion, and a model airplane flying field in the south. Walking paths, portable restrooms, parking, and restroom facilities are also provided.

Ypsilanti Township operates 27 facilities ranging from small tot lots to large regional attractions. The Township also maintains over 22 miles of trails, a golf course, and a senior center. Trail facilities begin on the north side of Bemis Road, and could eventually offer a direct non-motorized connection north to the City of Ypsilanti and further west to the City of Ann Arbor and communities beyond. Recreation programs provided by Ypsilanti Township are also available to Augusta residents for a fee.

Immediately to the west, **York Township** operates two parks. The parks are primarily passive-use, although Sandra Richardson Park also includes several soccer fields.

Pittsfield Township contains over 1,000 acres of parks and preserves and over 120 miles of trails. Pittsfield presents a strong opportunity to connect to Ann Arbor and the Border-to-Border/Iron Belle Trail system.

Washtenaw County Parks & Recreation offers a wide variety of programming opportunities and maintains several properties throughout the region. **Rolling Hills Water Park** in Ypsilanti Township features a wave pool, spraygrounds, a lazy river, and several water slides. Cross country skiing and sledding on a lighted hill are available in winter months, and the park's accessible woodland trails and soccer fields attract visitors throughout the year. Access to the park is free for pedestrians, but there is a parking fee for vehicles. There is an additional per person fee for the water park.

In Monroe County, on the Augusta and **London Township** border, the MDNR announced the acquisition of a 680-acre property known as **Crystal Waters**. While the property is yet to be developed, it will provide public access to hunting and fishing opportunities, seven inland water bodies, a potential shooting range and more than six miles of hiking trails.

In Wayne County, **Sumpter** and **Van Buren Townships** and the **City of Belleville** are additional sources of recreation. The three communities are home to over a dozen local parks, Crosswinds Marsh, several golf courses, and access to the Huron River Water Trail. New trail development in the area is slated to connect to the Huron-Clinton Metroparks, with the ultimate goal of non-motorized routes to Lake Erie and beyond.



Vern R. Campbell Park, City of Milan



Loonfeather Park, Ypsilanti Township



Lillie Park, Pittsfield Township

School Facilities

Augusta Township residents are served by two school districts, the Lincoln Consolidated School District and Milan Area Schools. Milan Area Schools serve a relatively small portion of the community in sections 19, 30, and 31, and no school buildings are located within the Township.

Lincoln Consolidated Schools campus is roughly bounded by Willis, Whittaker, Bemis, and Railsplitter Drive/Lincoln Trail. The campus includes a high school, middle school, three elementary schools, and an early learning center. The schools provide a variety of recreation opportunities for the community, and serve as the home of the Lincoln Golden Ages Senior Center. The District offers several youth programs including swimming, cross country, karate, and soccer. A newly constructed indoor soccer complex next to the football field is anticipated to be a major draw for teams across the region. Playground equipment and sports fields are important recreation options for Augusta residents during non-school hours.

As previously described, the campus has been at the center of discussions surrounding trail development in Augusta Township. It will be critical for the community to continue to nurture relationships with the District to allow development of facilities that benefit both students and Township residents alike.

Some of the amenities available at the schools include:

LINCOLN HIGH SCHOOL / MIDDLE SCHOOL

- Swimming pool
- Baseball / softball fields
- Soccer fields
- Tennis courts
- Gymnasium
- Performing Arts Center
- Multi-purpose indoor athletic facility

BISHOP ELEMENTARY

- Playground structures
- Playing fields
- Gaga Ball court
- Basketball courts

BRICK ELEMENTARY

- Ball diamond
- Playground equipment

Gaga ball court

CHILDS ELEMENTARY

- Climbing structures / playground equipment
- Foursquare courts
- Basketball courts
- Playing fields

MODEL ELEMENTARY

- Playground equipment
- Foursquare courts



Table of Contents	Executive Summary	Goals & Objectives	Action Plan	Needs Assessment & Public Participation	Recreation Inventory	Administrative Structure	Community Description
-------------------	-------------------	--------------------	-------------	---	----------------------	--------------------------	-----------------------

Table 6. Regional Recreation Facilities

				ACTIVE-USE ACTIVITIES										PASSIVE-USE ACTIVITIES																
Category	Key	Name	Acres / miles	Distance from Civic Center in miles	Baseball / Softball Fields	Basketball	Disc Golf	Golf	Horseshoes / Shuffleboard	Sand Volleyball	Skate Park	Soccer / multi-purpose field	Tennis & Pickleball	Zip Line	Banquet Facilities / Spec Events	Visitors Center	Community Center/ Indoor Fac.	Fitness Center / Equipment	Michigan State Park Explorer	Nature Programs	Geocaching	Metal Detecting	Dog Parks / Trial Course	Pet Friendly Area	Playground	Picnic Area	Picnic Shelter	Radio Control Flying	Watchable Wildlife / Birding	
STATE PARKS	1	Belle Isle State Park	982	34									•							•	•				•	•	•		•	
	2	Brighton Rec Area	4,947	25			•													•	•	•	•		•	•	•		•	
	3	Hayes State Park	654	29	•															•		•	•			•	•	•	•	
	4	Island Lake State Rec Area	4,000	20																					•		•		•	
	5	Maybury State Park	1,000	16																						•	•	•	•	
	6	Mike Levine Lakelands Trail	13 mi	22																						•	•	•		
	7	Pinckney Rec Area	11,000	23																•		•			•	•	•		•	
	8	Proud Lake State Rec Area	4,700	25																•					•	•	•			
	9	Sterling State Park	1,300	24																•						•	•	•		
	10	Waterloo Rec Area	20,000	26			•										•						•			•	•	•		•
	11	Watkins Lake State Park	1,122	28																									•	
	12	WG Milliken State Park	31	31																•							•	•		
42	Crystal Waters	680	0																											
METROPARKS	13	Delhi	81	13																•	•				•	•	•			
	14	Dexter-Huron	122	15	•															•	•				•	•	•			
	15	Hudson Mills	1,549	19			•		•	•			•			•				•	•				•	•	•		•	
	16	Huron Meadows	1,576	21					•			•								•	•				•	•	•			
	17	Kensington	4,543	23			•	•	•	•			•			•	•			•	•				•	•	•		•	
	18	Lake Erie	1,607	24				•																	•	•				
	19	Lower Huron	1,258	10																										
	20	Oakwoods	1,756	15																										
	21	Willow	1,700	13			•																							
COUNTY PARKS	22	Cavanaugh Lake Park	2.5	25																	•				•	•	•	•		
	23	County Farm Park	127	6																•	•				•	•	•	•	•	
	24	Independence Lake Park	312	16			•		•							•				•	•				•	•	•	•	•	
	25	Merri Lou Murray Rec. Center	-	6		•							•						•			•								
	26	Park Northfield	12	11																		•			•		•	•	•	
	27	Parker Mill County Park	45	5																	•	•			•		•	•	•	
	28	Pierce Lk Golf Course & Park	225	21			•	•														•					•	•	•	
	29	Rolling Hills County Park	439	3			•						•			•					•	•			•	•	•	•	•	
	30	Sharon Mills County Park	264	25												•					•	•			•				•	
	31	Staebler Farm County Park	98	9													•	•			•	•			•		•		•	
	32	Superior Center Park	1	7																		•				•				
	33	Swift Run Dog Park	10	5																		•		•	•					
TRAILS	42	Border-to-Border Trail	20 mi	1																										
	43	Hines Park Greenway	19.5 m	13																										
	44	Huron Valley Trail	12.2 m	20																										
	45	I-275 Metro Trail	33 mi	10																										
	46	Kiwanis Trail	8 mi	28																										
	47	Lower River Rouge Trail	4 m	11																										
	48	Matthei Botanical Garden Tr.	2 mi	8																										
41	Metroparks Trail	16 mi	10																											

Regional Recreation Facilities

In addition to the local recreation facilities, Augusta residents have access to over 43,000 acres of state-, county-, and Huron-Clinton Metropark facilities, water trails, and extensive multi-use trails within a few minutes drive. These large facilities provide opportunities such as camping, swimming, boating, hiking and golfing which are typically beyond the ability of a local municipality to provide. Table 6 on page 24 lists the nearby regional recreational facilities and the activities they offer.

Comparison to Recreation Standards

The National Recreation and Park Association (NRPA) has classified parks and recommended an appropriate amount of parkland for a given population size. Although these guidelines are useful in pointing out deficiencies, a community's recreation system should be tailored to meet the needs of the community.

According to the NRPA, parks and open spaces are categorized as mini-parks, neighborhood parks, community parks, and regional parks. The mini, neighborhood, and community parks are the close-to-home parks, designed to satisfy the recreational needs of local communities within a service radius of up to two miles. According to NRPA standards, the amount of close-to-home parkland recommended is 6.25 to 10.5 acres for every 1,000 residents.

Regional parks and preserves serve a broader area (a service radius of about 40 miles) than community parks and focus on meeting the recreation needs of the region as well as preserving unique landscapes and open spaces. This would include the state-owned, HCMA, and County parks and recreation areas described in this plan. The NRPA suggested standard for regional parks is 15 to 20 acres of parkland per 1,000 people.

Other types of parks including school sites, greenways, and private recreation facilities, which can also contribute to the local park and recreation system:

- Schoolyards: areas that can fulfill the space requirements for other classes of parks such as neighborhood and community parks, and would include the Lincoln Consolidated School facilities;
- Greenways: areas that link park system components together to form a continuous park environment; and
- Natural Resource Areas: land set aside for the preservation of significant natural resources or open spaces.

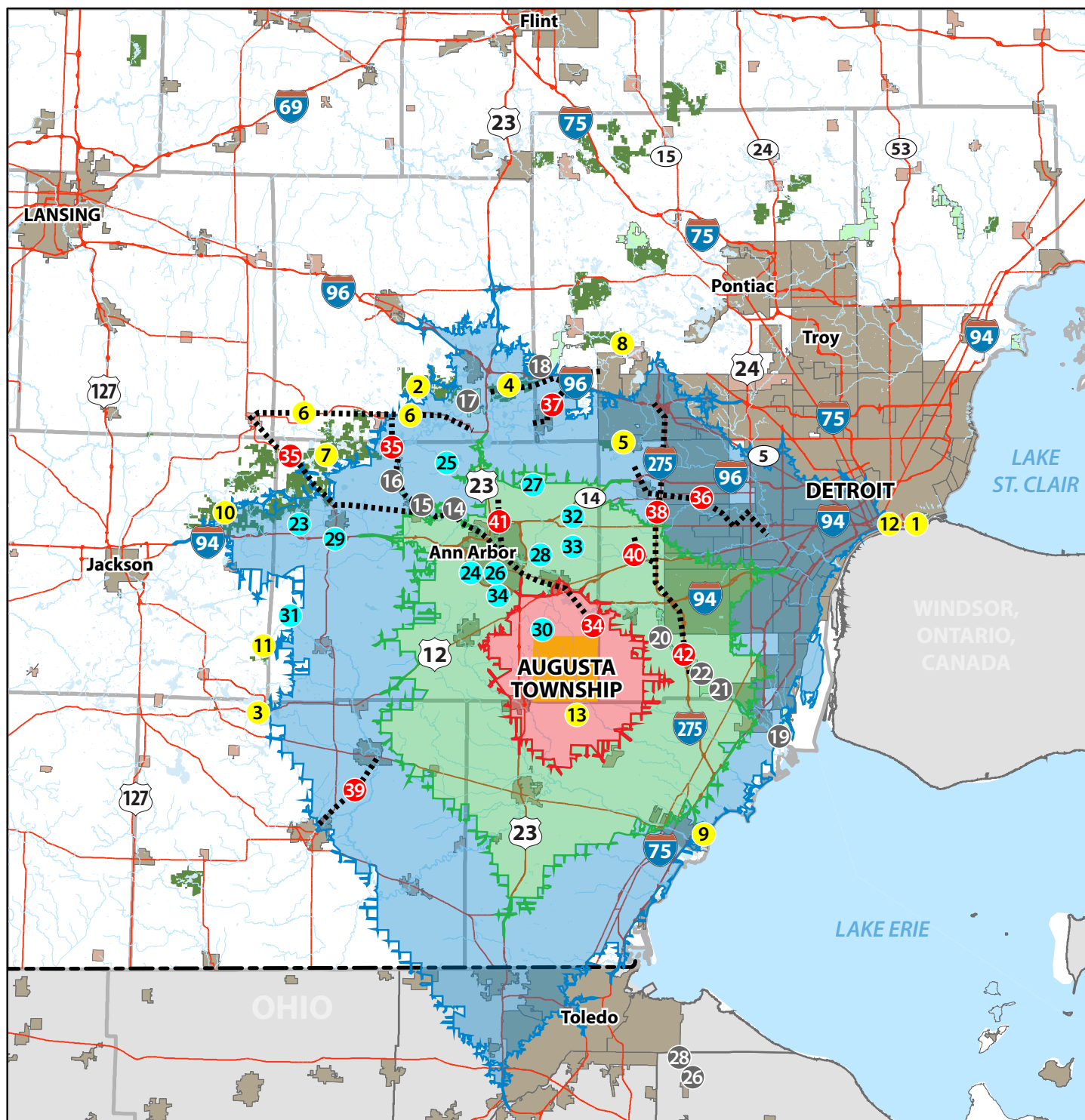
According to the NRPA standards, the Township recreation properties do not meet the minimum acreage for close-to-home parkland. While Augusta Township residents are well served by regional recreation and game areas, and have access to facilities provided by the Lincoln Consolidated School District, there are no close-to-home facilities available for residents to utilize.

Table 7 compares the NRPA suggested standard with existing Township parks based on American Community Survey (ACS) 2020 population estimates and SEMCOG projected population for 2045. According to these suggested parkland acreage standards, Augusta's parks fall short of the total recommended acreage for close-to-home parkland. As new developments are planned in coming years, it will be important to work with developers to set aside space for local recreation opportunities. Tot lots and micro-parks owned and operated by homeowner associations or other housing authorities can help to address the deficiency in this area.

Table 7. Suggested Parkland & Acreage

Type of Park	NRPA Minimum Standard Acres per 1,000 residents	Required Parkland Acres (Based on 2020 population of 7,083)	Required Parkland Acres (Based on 2045 population of 12,207)	Existing Acreage	2021 Parkland Surplus / Deficiency
Close to Home Parkland	6.25 - 10.5	44.3 - 74.4	76.3 - 128.2	0	44 - 74 acre deficiency
Regional Parks within 1 hour drive	15 - 20	106.2 - 141.7	183.1 - 244.1	65,463+ acres	~65,000 acre surplus
School Sites	n/a	n/a	n/a	324	n/a
Trails (within Township)	n/a	n/a	n/a	0 miles	n/a

Map 2. Regional Recreation Facilities



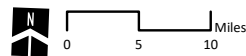
- | | | | |
|--|---|---|---|
| <p>STATE PARKS</p> <ol style="list-style-type: none"> 1. Belle Isle State Park 2. Brighton Rec Area 3. Hayes State Park 4. Island Lake Rec Area 5. Maybury State Park 6. M. Levine Lakelands Trail 7. Pinckney Rec Area 8. Proud Lake Rec Area 9. Sterling State Park 10. Waterloo Recreation Area 11. Watkins Lake State Park & County Preserve 12. WG Milliken State Park 13. Crystal Waters (new) | <p>METROPARKS</p> <ol style="list-style-type: none"> 14. Delhi 15. Dexter-Huron 16. Hudson Mills 17. Huron Meadows 18. Kensington 19. Lake Erie 20. Lower Huron 21. Oakwoods 22. Willow | <p>COUNTY PARKS</p> <ol style="list-style-type: none"> 23. Cavanaugh Lake Park 24. County Farm Park 25. Independence Lake Park 26. Meri Lou Murray Rec. Ctr. 27. Park Northfield 28. Parker Mill County Park 29. Pierce Lake Golf Course & Park 30. Rolling Hills County Park 31. Sharon Mills County Park 32. Staebler Farm County Park 33. Superior Center Park 34. Swift Run Dog Park | <p>MAJOR TRAILS</p> <ol style="list-style-type: none"> 35. Border-to-Border 36. Hines Park Greenway 37. Huron Valley Trail 38. I-275 Metro Trail 39. Kiwanis Trail 40. Lower Rouge River Trail 41. Matthei Botanical Garden Trail 42. Metroparks Trail |
|--|---|---|---|

DRIVE TIMES

- 15 minutes or less
- 30 minutes or less
- 60 minutes or less

Regional Recreation Opportunities

Augusta Township



Source: Washtenaw County GIS
ESRI Business Analyst
Carlisle/Wortman Associates
October 2021

Conversely, the residents of the area are exceptionally well-served by the regional park facilities provided by the state and other entities. These regional facilities, with their well blended mix of active and passive recreation opportunities, effectively act as the Township's community parks. Adjacent township parks, private, and school recreational facilities also act as important recreational opportunities for Township residents.

Accessibility Assessment

A critical component in planning for recreation facilities is providing barrier-free access to accommodate the needs of all people, including disabled individuals. The ranking system suggested by the Michigan Department of Natural Resources Guidelines (2006) to determine accessibility was used to evaluate Township parks. The ranking system ranges from 1 to 5:

1. None of the facilities meet accessibility guidelines
2. Some of the facilities/park areas meet accessibility guidelines
3. Most of the facilities/park areas meet accessibility guidelines
4. The entire park meets accessibility guidelines
5. The entire park was developed/renovated using the principles of universal design

As Augusta Township considers development of recreation properties, it will be important to comply with or exceed accessibility guidelines of the American with Disabilities Act (ADA). Incorporating features such as wheelchair platforms near benches, slip-free and stable surfaces for trails, and paved accessible parking spaces allow individuals with differing abilities to access and utilize the facilities. This can be especially important for communities with aging populations.

Status Of Grant Assisted Projects

Augusta Township has not pursued or received any MDNR grants as of the writing of this plan. The Township did receiving a Connecting Communities grant from Washtenaw County to help with development of the 2020 Trail Feasibility Study. As the Township moves forward with recreation development, it is anticipated that they will pursue funding assistance from a variety of sources including the MDNR.

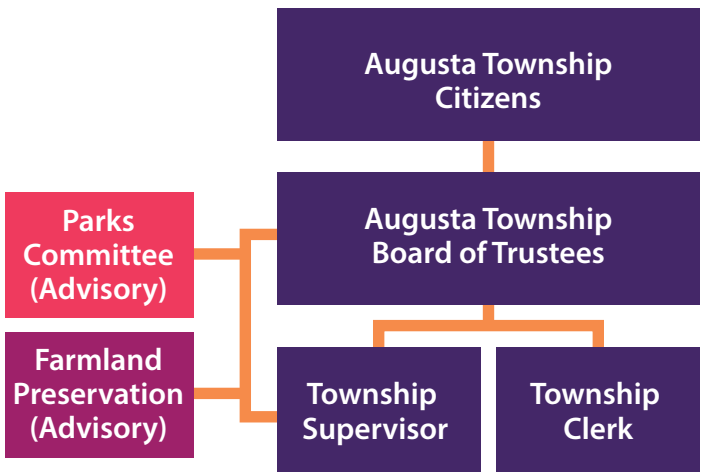
Chapter 6: Administrative Structure

The administration of parks and recreation services in Augusta Township is the responsibility of the Township Board. A Parks Committee was established to provide recommendations to the Board on park and trail development issues. This Committee meets once per quarter.

A Steering Committee was also established to guide the preparation of this Recreation Plan; it is comprised of Parks Committee members, and continues in an advisory role to the Board.

Township voters approved a Farmland and Open Space Preservation millage in 2016 which continues through 2025. allows the Township to purchase portions of a property or the Development Rights of the property for the purposes of preservation of farmlands, open spaces, and wildlife habitats. A five-person Farmland Preservation Board (FPB) was created to administer the funds and advise the Township Board on spending and related issues. Members serve two-year terms but may be reappointed at the end of their terms. The FPB meets every other month. The FPB is also responsible for working to develop sources of funding for the acquisition of identified development rights, including but not limited to general appropriations by the Township, grants, donations, bonds, special assessments, and so on.

Figure 4. Organizational Chart



The ballot language stated that the millage funds may be used to, "... permanently preserve farmland, open space, wildlife habitat and scenic views, protect drinking water sources and the water quality of rivers and streams, and construct and maintain new parks, recreational areas and trails..." To date, the funds raised have not been used for park creation. The Township is considering a new ballot initiative to explicitly fund only park and trail projects.



Table of Contents
Executive Summary
Goals & Objectives
Action Plan
Needs Assessment & Public Participation
Recreation Inventory
Administrative Structure
Community Description

Funding & Budget

As the Township currently has no recreation properties, funding has not been established for recreation purposes at this time. It is anticipated that as recreation facilities are developed, maintenance and improvements of the facilities will be funded through the Township General Fund. As mentioned earlier, some funding may be available through the Farmland Preservation millage.

Volunteers & Partnerships

Augusta Township has a close relationship with Lincoln Consolidated School District. Residents regularly take advantage of recreation programs offered by the District and utilize their athletic fields and playgrounds during off hours. The Township has been working with the District in recent years to evaluate opportunities for trail development on the school campus. As one of the main anchors of the Township, this relationship is vitally important for growth and development in the community.

The Township resolved in 2020 to appropriate \$4,500 to the Lincoln Golden Ages Senior Center, a senior services and activity group based out of Lincoln High School. This group provides vital services to local seniors, and is an important social outlet for many residents.

Service clubs and community groups play a significant role in providing volunteer labor and financial support for park facilities and programs across the region. While these clubs may not be specifically located within the Township borders, their philanthropic efforts could be a valuable resource for Augusta in terms of fundraising and volunteer efforts. Some clubs and groups which could play a role in the Township recreation development are listed in the table to the right.

Local service clubs:	<ul style="list-style-type: none">• Lions (Ypsilanti, Belleville)• Elks (Plymouth-Ann Arbor)• American Legion (Milan, Ypsilanti)• Rotary (Ypsilanti)• Moose (Ypsilanti, Monroe)
Scouting Groups:	<ul style="list-style-type: none">• Boy Scouts of America• Girl Scouts
Recreation Use Groups:	<ul style="list-style-type: none">• Michigan Mountain Biking Association• League of Michigan Bicyclists• Washtenaw Bicycling & Walking Coalition• Ann Arbor Bike Touring Society• PALM (Pedal Across Lower Michigan)
Land Conservancies	<ul style="list-style-type: none">• Washtenaw Audubon Society• Southeast Michigan Land Conservancy
Other Organizations:	<ul style="list-style-type: none">• Friends of the Border-to-Border Trail• Adopt-a-Trail Volunteers

Chapter 7: Community Description

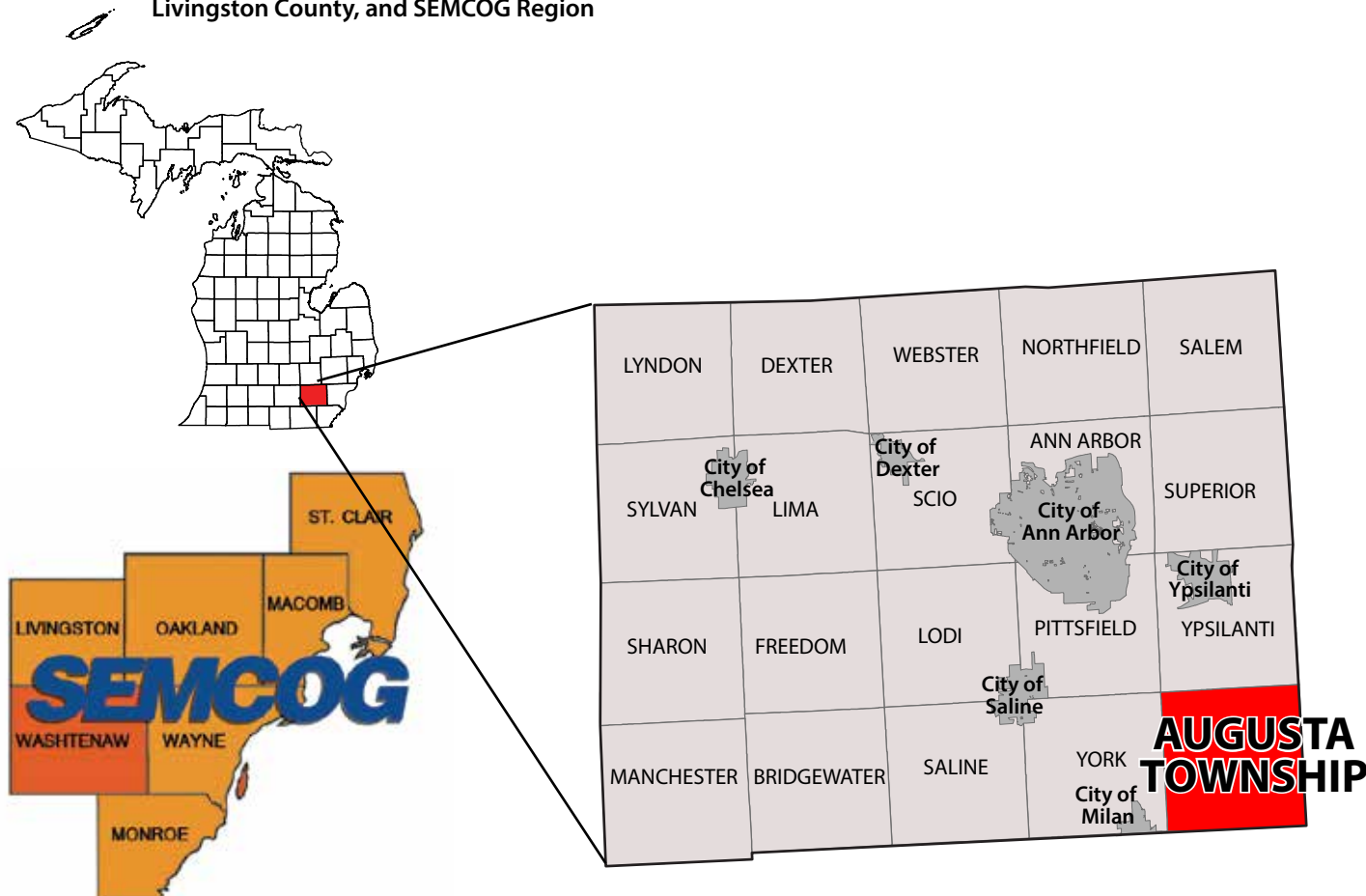
Regional Setting

Augusta Charter Township is located in southeastern Washtenaw County. It borders Monroe County to the south and Wayne County to the east. Augusta Township is approximately 5 miles east-southeast of Ann Arbor, or ten miles west of the Detroit Metropolitan Airport. The City of Milan effectively touches the southwest corner of the Township. While there are no major highways or thoroughfares located in the Township, Augusta is still readily accessible by US-23 (~1.5 miles east) and I-94 (~4.5 miles north). While there has been strong residential growth in recent years, the Township remains a primarily agricultural community. The unincorporated community of Willis is situated in the heart of the Township, and is home to the Augusta Township Hall. Augusta Township residents consider the Township a highly desirable place to live because of its open spaces and natural areas.

Washtenaw County is located in the western portion of the Southeast Michigan Council of Governments (SEMCOG) region. SEMCOG is the regional planning agency that conducts planning studies and maintains a comprehensive database of information about each community it serves. It is a source for some of the population and land use related data included in this report.

In planning for the future recreation needs of Augusta Township, it is essential to understand both the community of people to be served and the recreation resources which the community offers. This chapter of the master plan provides an overview of the population, physical, and recreation resources of the Township with the goal of understanding the unique features and opportunities the community offers.

Figure 5. Context Maps - State of Michigan, Livingston County, and SEMCOG Region



Population and Housing

Table 8 and Table 9 present the population, household, and housing characteristics of Augusta Township according to the U.S. Census Bureau and SEMCOG Forecast information. Augusta has seen continued growth since 1990, with percentage growth rates increases varying between Census periods. SEMCOG forecasts strong growth for the Township. From a numeric perspective, Augusta's three Washtenaw neighbors will have larger population increases by 2045 (Augusta 5,124, Pittsfield 16,339, York 8,226, and Ypsilanti Township 5,451), but only York Township is projected to have a higher percentage growth rate (Augusta 72.3%, York 90.3%).

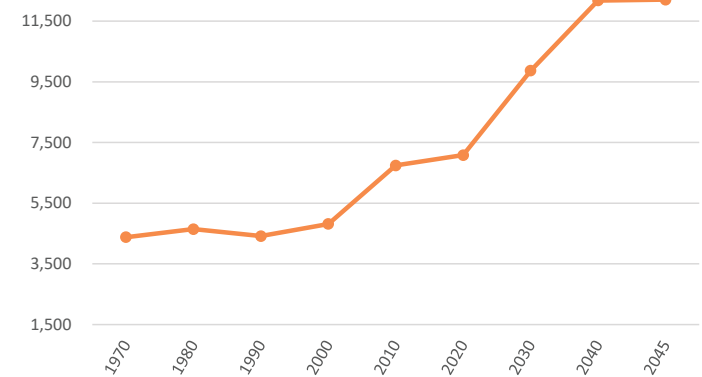
Table 8. Population Projections, Augusta Township Area*

Community	2020	2045	% change 2020-2045
Augusta Twp	7,083	12,207	72.3%
Pittsfield Twp	39,147	55,486	41.7%
York Twp	9,108	17,334	90.3%
Ypsilanti Twp	55,670	61,121	9.8%
City of Ypsilanti	20,648	24,480	18.6%
City of Milan	6,079	5,474	-10.0%
Exeter Twp	3,382	3,240	-4.2%
London Twp	2,984	2,653	-11.1%
Milan Twp	1,571	2,137	36.0%
Sumpter Twp	9,660	8,641	-10.5%
Van Buren Twp	30,375	35,966	18.4%
Washtenaw	372,258	452,791	21.6%
Southeast MI	4,830,489	5,104,922	5.7%

Table 9. Historical Population Data, Augusta Township Area

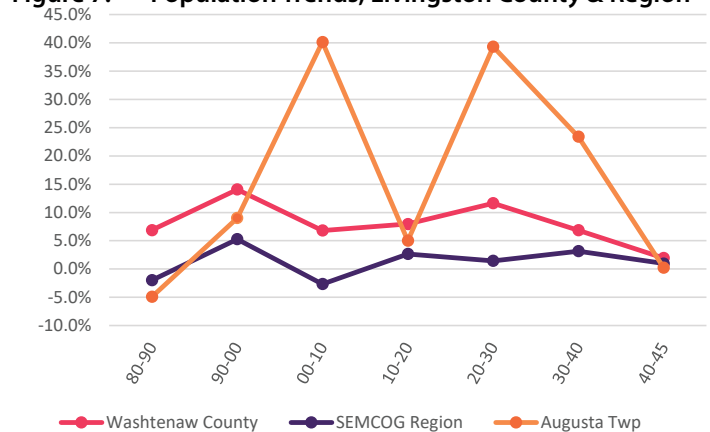
Community		1990	2000	2010	2020 (SEMCOG Estimate)	Percent change 2010 - 2020
Livingston County	Augusta Twp	4,415	4,813	6,745	7,083	7.0%
	Pittsfield Twp	17,650	30,167	34,663	39,147	14.9%
	York Twp	6,225	7,392	8,708	9,108	5.4%
	Ypsilanti Twp	45,307	49,182	53,362	55,670	4.7%
	City of Ypsilanti	24,846	22,237	19,435	20,648	5.5%
	City of Milan	4,040	4,775	5,836	6,079	5.1%
Washtenaw County	Exeter Twp	2,753	3,222	3,406	3,382	-0.7%
	London Twp	2,915	3,024	3,048	2,984	-2.1%
	Milan Twp	1,659	1,670	1,601	1,571	-1.8%
Monroe County	Sumpter Twp	10,891	11,856	9,549	9,660	0.9%
	Van Buren Twp	21,010	23,559	28,821	30,375	6.6%
	Washtenaw Cty	282,937	322,770	344,791	372,258	8.5%
	Southeast MI	4,590,468	4,833,368	4,704,809	4,830,489	2.6%

Figure 6. Augusta Township Population Trends



Source: US Census, ACS, SEMCOG

Figure 7. Population Trends, Livingston County & Region

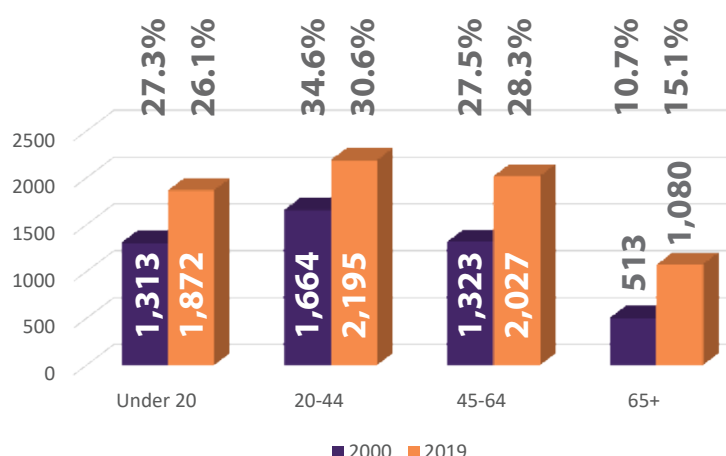


Source: US Census, ACS, SEMCOG

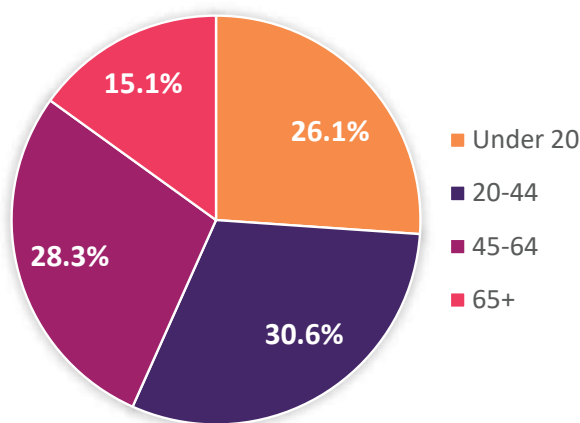
Table 10. Median Age, Augusta Township & Region

Year	Augusta Township	Washtenaw County	State of Michigan
2010	42.7	32.8	38.1
2011	41.6	32.8	38.5
2012	40.2	33.1	38.8
2013	40.6	33.3	39.1
2014	38.6	33.3	39.3
2015	38.4	33.4	39.5
2016	39.3	33.4	39.6
2017	40	33.4	39.6
2018	39.8	33.4	39.7
2019	40.1	33.6	39.7

Source: US Census, ACS, SEMCOG

Figure 8. Age Distribution Comparison 2000 - 2019

Source: US Census, ACS, SEMCOG

Figure 9. Augusta Township Age Distribution 2019

Source: US Census, ACS

Interestingly, Augusta Township appears to be bucking the trend towards an aging populace. As shown in Table 10, Augusta's median age actually decreased from 42.7 in 2010 to 38.4 years in 2015. This contrasts with the trends in Washtenaw County and the state, where the median age has been slowly but surely increasing each year. The median age in Augusta is significantly higher than Washtenaw County as a whole, however, and is slightly higher than the State of Michigan. It's also important to note that the median has been rising since 2015; while the median remains lower than the rates seen in 2010, it does look to be rising overall.

A closer look at the Township's age breakdown helps to shed light on the aging trend. Table 11 and Figure 8 on this page and Table 12 on page 34 indicate a shift in demographics even as population numbers are growing. Household sizes continue to decrease while the number of households with residents 55 and older is increasing. The number of households with seniors increased 31.7% between 2010 and 2019, and is projected to jump by 218.7% by 2045. These figures suggest that established Augusta residents are more likely to "age in place", and that new residents tend to be older and living without children at home. It emphasizes the importance of meeting the recreation needs of an older population.

Table 11. Augusta Township Age Ranges 2000 - 2019

Age group	Census 2000	Census 2010	ACS 2019	% change 2000 - 2019
Under 5	253	413	462	82.6%
5 - 9	348	459	299	-14.1%
10 - 14	359	504	578	61.0%
15 - 19	353	507	533	51.0%
20 - 24	216	307	394	82.4%
25 - 29	214	294	417	94.9%
30 - 34	311	397	418	34.4%
35 - 39	436	464	473	8.5%
40 - 44	487	504	493	1.2%
45 - 49	459	570	434	-5.4%
50 - 54	355	581	432	21.7%
55 - 59	285	517	672	135.8%
60 - 64	224	405	489	118.3%
65 - 69	164	310	465	183.5%
70 - 74	138	209	246	78.3%
75 - 79	99	126	255	157.6%
80 - 84	74	110	65	-12.2%
85 and up	38	68	49	28.9%

Source: US Census, ACS, SEMCOG

Table 12. Household Characteristics

Household Types	Census 2010	ACS 2019	% change	2045 SEMCOG
With seniors 65+	597	786	31.7%	2505
Without seniors	1836	1732	-5.7%	2577
Live alone 65+	162	220	35.8%	596
Live alone, under 65	282	250	-11.3%	904
2+ persons with children	861	764	-11.3%	1286
2+ persons without children	1128	1284	13.8%	2296
Total Households	1,286	1,474	14.6%	1,655

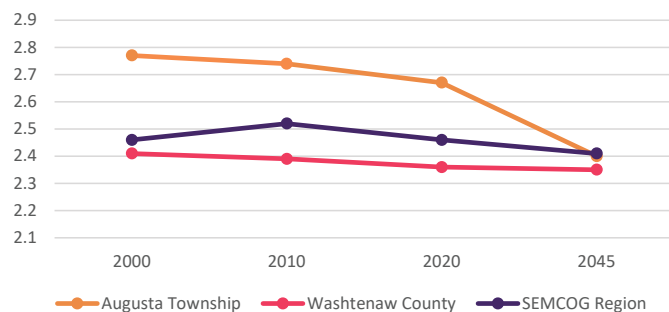
Source: US Census, ACS, SEMCOG

Table 13. Household Size, Augusta Township & Region

	2000	2010	2019	2045
Augusta	2.77	2.74	2.67	2.4
Washtenaw Cty	2.41	2.39	2.36	2.35
SEMCOG Region	2.46	2.52	2.46	2.41

Source: US Census, ACS, SEMCOG

Figure 10. Household Size Trends



Source: US Census, ACS, SEMCOG

Table 14. Components of Population Change

Component	2000 - 05 average	2006 - 10 average	2011 - 18 average
Natural increase (births/deaths)	18	22	4
• Births	65	66	64
• Deaths	47	44	60
Net Migration (movement in - movement out)	33	43	39
Population Change (Natural Increase + Net Migration)	321	65	43

Source: Michigan Dept. of Community Health Vital Statistics, US Census, SEMCOG

Housing

According to the SEMCOG, there are 2,563 housing units in Augusta Township, an decrease of 1.9% from 2010. Augusta's housing stock consist primarily of single-family detached units (83.8%) with the majority of the remaining housing being mobile homes (14.3%). 69 units are described as multi-unit apartments. The decrease in housing units stands in contrast to increases in neighboring Washtenaw County communities, but is consistent with decreases seen in Wayne and Monroe Counties.

Table 15. Housing Stock, Augusta & Surrounding Region

Community	Census 2010	ACS 2019	# Change	% Change
Augusta Twp	2613	2563	-50	-1.9%
Pittsfield Twp	14808	15573	765	5.2%
York Twp	2438	2610	172	7.1%
Ypsilanti Twp	23447	23468	21	0.1%
City of Ypsilanti	9271	8617	-654	-7.1%
City of Milan	2487	2502	15	0.6%
Exeter Twp	1302	1166	-136	-10.4%
London Twp	1186	1127	-59	-5.0%
Milan Twp	647	660	13	2.0%
Sumpter Twp	4050	4042	-8	-0.2%
Van Buren Twp	13315	12956	-359	-2.7%
Washtenaw Cty	147573	151023	3450	2.3%
Southeast MI	2060749	2084753	24004	1.2%

Source: US Census, ACS, SEMCOG

98.2% of Augusta's housing units are occupied, with 87.7% owner-occupied and 10.5% renter-occupied. Vacant units fell from 6.9% in 2010 to to 1.8% in 2019. Residential property values fell 14.9% between 2010 and 2019, with the median housing value dropping from \$246,698 to \$210,000. Gross rent fell by almost 17% during that same period, with the median gross rent dropping from \$1,520 in 2010 to \$1,300 in 2019.

New building permits started to recover from the Great Recession in 2013, but were hit hard by the onset of the COVID-19 pandemic in 2020. A net total of 122 new permits have been issued since 2016.

Land Use Patterns & Development Trends

Augusta Township is primarily a rural and agricultural community consisting of significant amounts of farmland, open space and low density residential development. The Township has experienced a 2.4% loss in agricultural land in recent years, however, corresponding with an increase in single-family residential development. According to SEMCOG 2020 Land Use data, total land area dedicated to housing increased by 86.4 acres between 2015 and 2020, while agricultural uses fell by 418 acres.

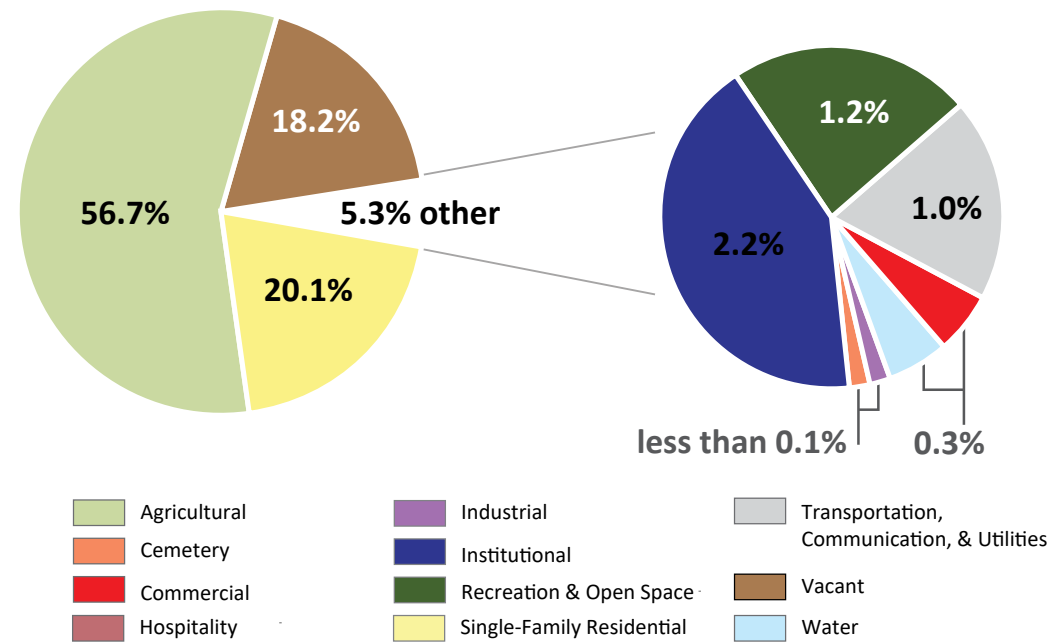
While change is not dramatic, it does show a slow but steady move away from agriculture and highlights the importance of preserving open spaces. The Township may wish to consider acquiring farmland or other sensitive properties while they remain available.

Table 16. Existing Land Use 2020

Land Use	Acres	Percent
Agricultural	8738	56.7%
Single-family Residential	3098	20.1%
Vacant	2800	18.2%
Institutional	338	2.2%
Recreation & Open Space	189	1.2%
Transportation, Communication, & Utilities	158	1.0%
Water	43	0.3%
Commercial	41	0.3%
Industrial	10	0.1%
Cemetery	5	0.0%
Total Acres	15420	

Source: Washtenaw County GIS

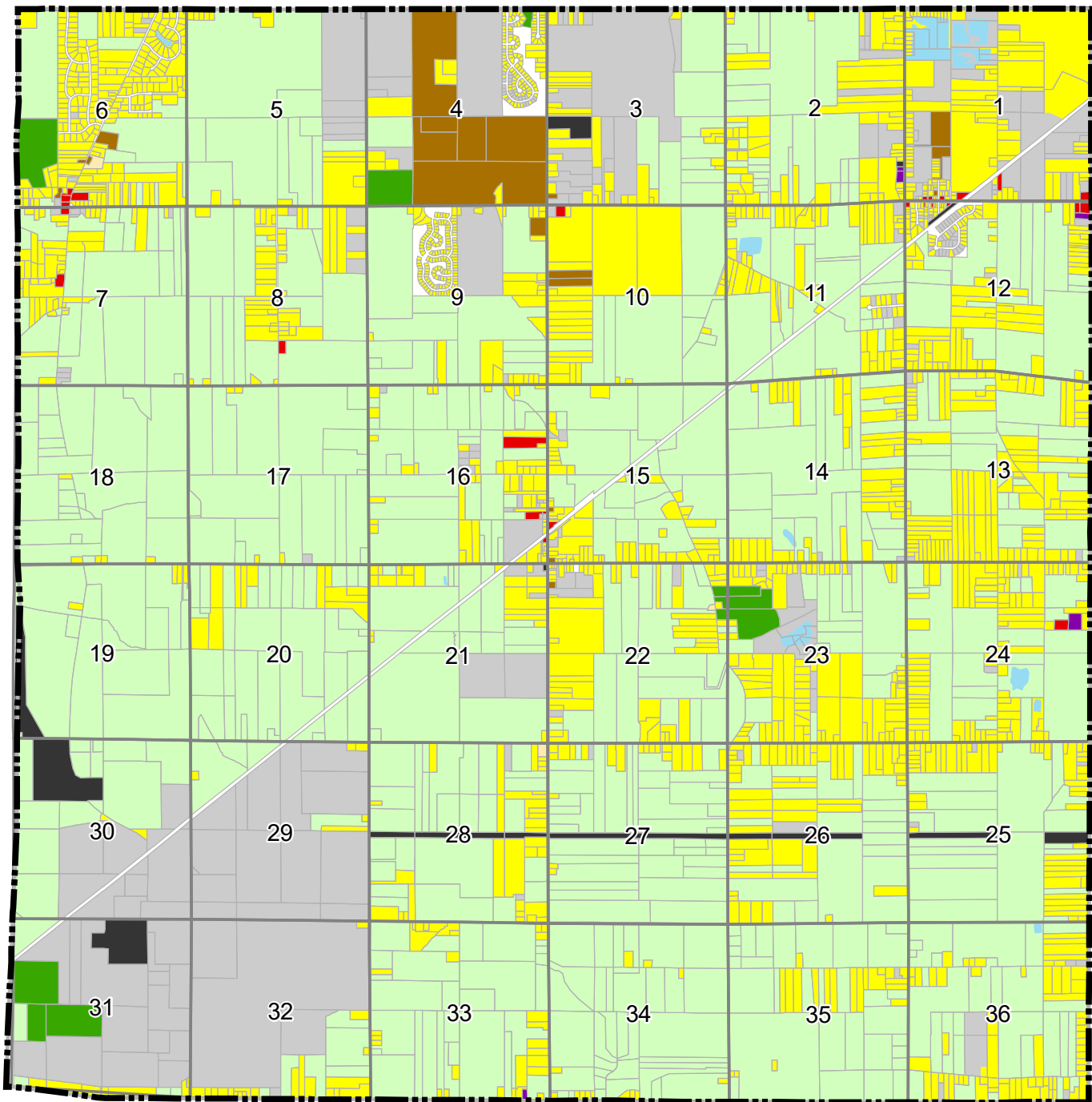
Figure 11. Existing Land Use 2020



Source: Livingston County GIS

Table of Contents
Executive Summary
Goals & Objectives
Action Plan
Needs Assessment & Public Participation
Recreation Inventory
Administrative Structure
Community Description

Map 3. Existing Land Use



Existing Land Use

Augusta Township
Washtenaw County, Michigan



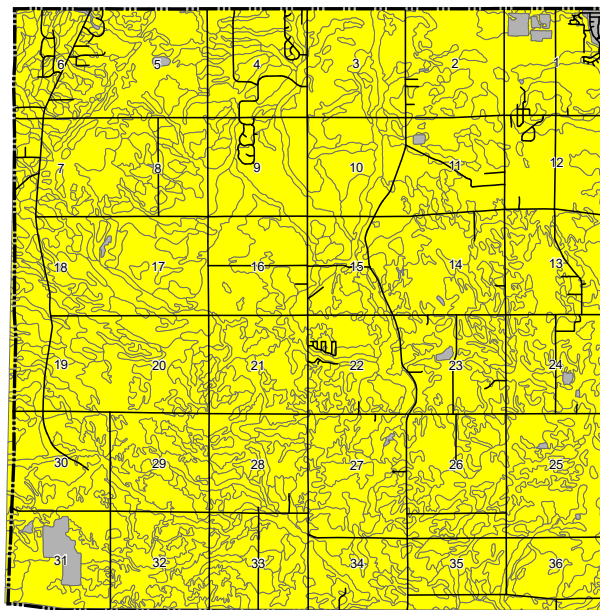
0 0.25 0.5 1 Miles

Source: Augusta Twp and Washtenaw Cty Data
October 6th, 2021
Carlisle/Wortman Associates, Inc
Ann Arbor, Michigan

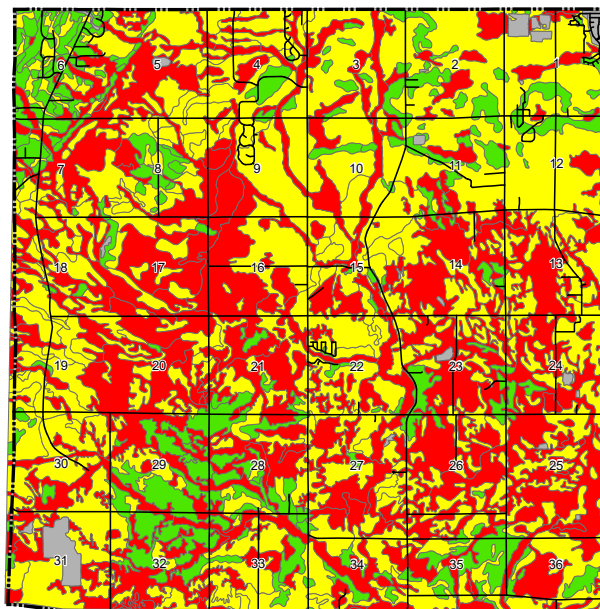


Figure 12. USDA Soil Survey Suitability Maps

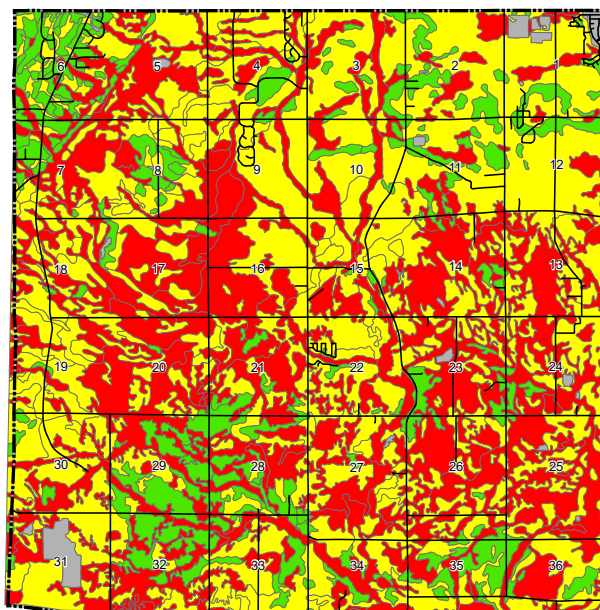
PLAYGROUNDS



PATHS & TRAILS



PICNIC SHELTERS



Natural Features

Augusta is nearly evenly split by the Norfolk Southern Railroad, running south-southwest from Section 1 to Section 31. North of the railroad, the land is dominated by large, open farm fields. Augusta's densest population centers are located in this half of the Township, primarily centered around the Lincoln Consolidated Schools campus in Section 4.

South of the railroad, significant woodland stands remain undeveloped. Like much of Michigan's southern Lower Peninsula, the Township's landscape was formed as a result of glacial action. The terrain was formed by retreating glaciers approximately 14,000 years ago, creating a layer of sand ranging from 5 to 30 feet in depth deposited over glacial clay. As the ancient lakes retreated, they left behind highly saturated soil and aquifers, with water draining to the south-southeast. This is evidenced today in the form of large amounts of wetlands in the area. In general, topography and soils resulted from glacial activity, while plant communities developed in response to soil conditions.

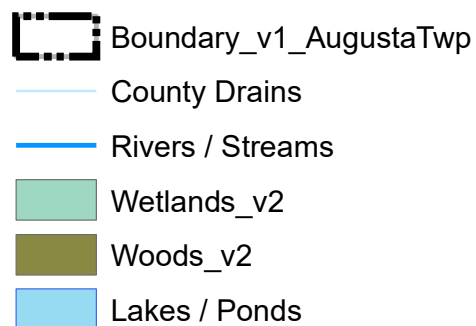
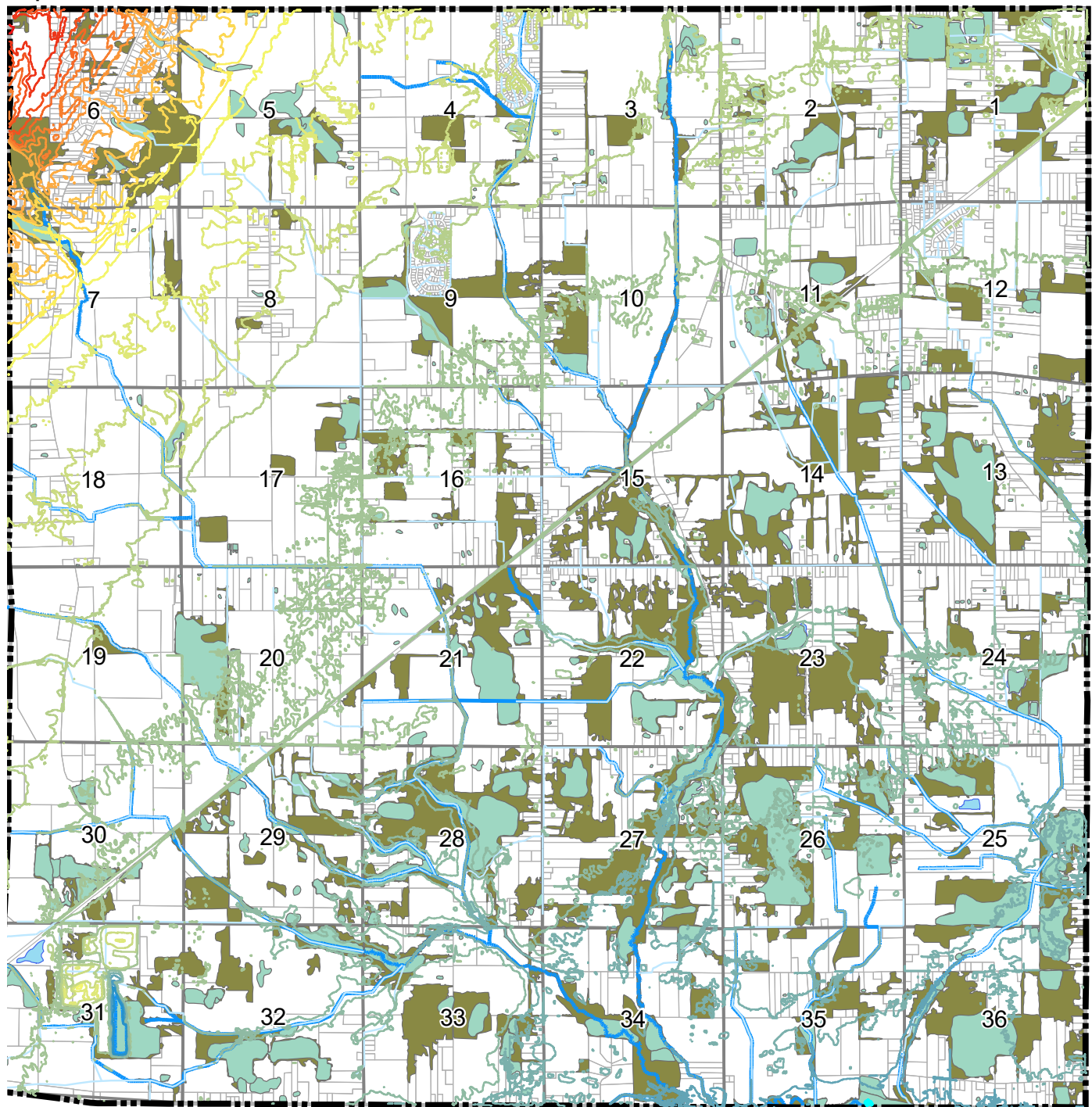
Augusta Township is characterized by relatively flat terrain. The land surface of the Township varies by only about 194 feet from its lowest point to its highest point. Technically speaking, the lowest point in the Township (626 feet) is found at the edge of a lake in Section 31. More generally, the topography is at its highest point (820 feet) in Section 6 in the northwest corner of the Township, and at its lowest in section 35 near Bunton and Torrey Road.

Wetlands cover a considerable area of Augusta Township. The most predominant wetland type is freshwater forested / shrub wetlands, found scattered throughout the Township. Other types of wetlands found in the township include emergent wetland, wet meadows, and riverine wetlands.

The Township is primarily located within the Stony Creek watershed with a small northeast portion of the Township draining by into the Swan Creek watershed. These watersheds ultimately drain into Lake Erie.

Soil types within the Township are predominantly sandy loams, generally characterized as being somewhat poorly drained and depths to the water table of 12 to 24 inches. According to the USDA Soil Survey, Augusta's soil is fairly conducive to recreation development, especially in the northeast quadrant (Figure 12).

Map 4. Natural Features



Natural Features

Augusta Township
Washtenaw County, Michigan



0 0.25 0.5 1 Miles

Source: Augusta Twp and Washtenaw Cty Data
October 6th, 2021
Carlisle/Wortman Associates, Inc
Ann Arbor, Michigan



Planning Initiatives

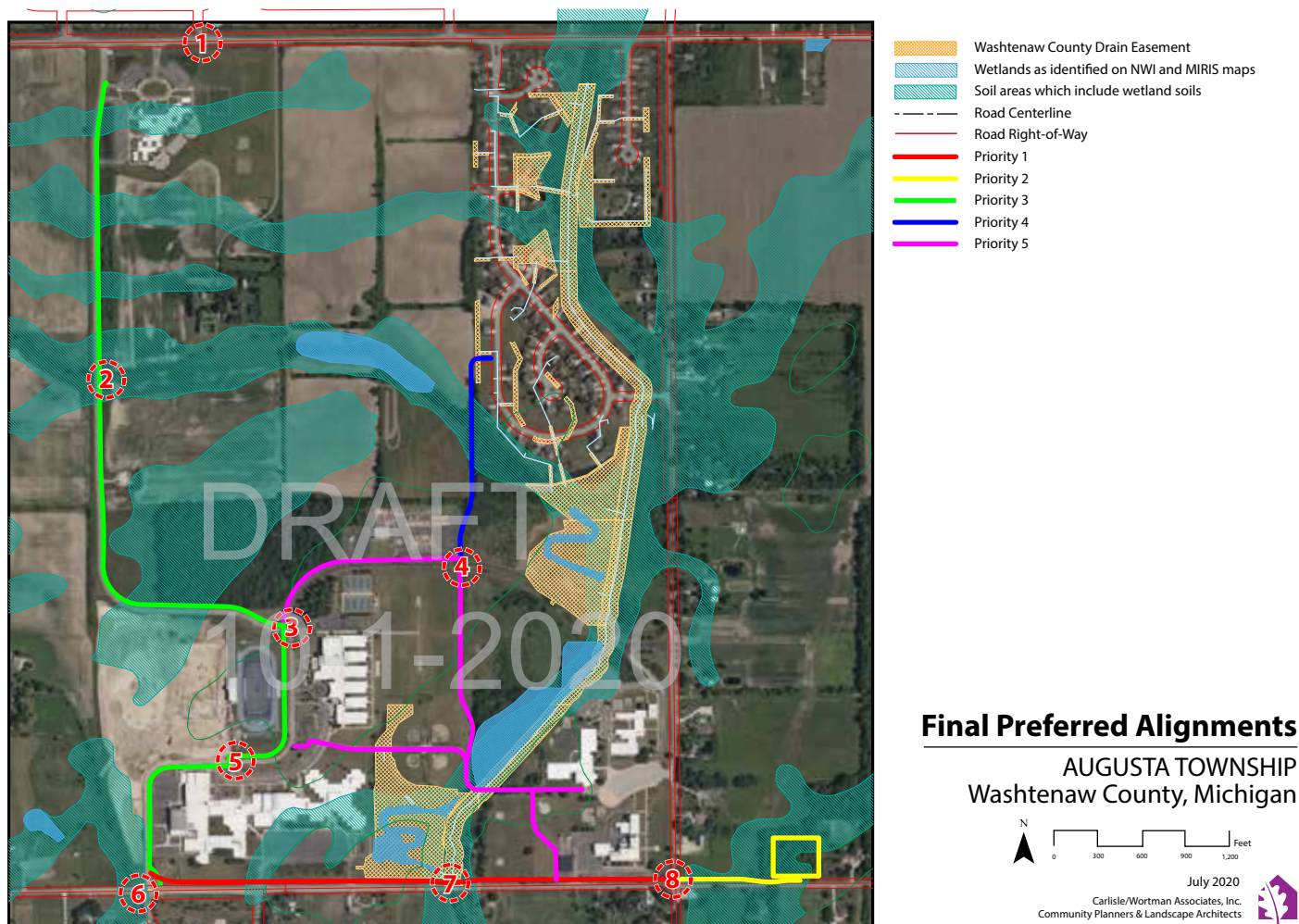
While change is inevitable and growth in both population and housing will occur, Augusta Township is committed to managing that growth to preserve its rural character and natural resources while enhancing recreational activities and overall quality of life for all its residents.

Augusta Township 2020 Trail Feasibility Study

The 2020 Trail Feasibility Study was initiated to evaluate trail development potential for a potential park on Willis Road (see page 17) and evolved into a connectivity study for the park and the nearby Lincoln Consolidated Schools complex. The study considered a number of different non-motorized amenity treatments, from onroad bike lanes to off-road rustic paths, and identified major constraints including the crossing over the west

branch of Paint Creek. Ultimately, five primary routes were identified, which lead to discussions with the School District to develop the "Priority 2" route along Railsplitter Drive and Lincoln Trail. Should the trails be developed as planned, Augusta Township residents will be able to connect to the Ypsilanti Township trail system north of Childs Elementary, and on to connected regional trails across the state.

Figure 13. Augusta Township 2020 Trail Feasibility Study



Source: Adapted from "Vegetation circa 1800 of Livingston County, Michigan", Michigan Department of Natural Resources, 1997

Augusta Township 2022 Master Plan Update

The Township is in the process of updating their Comprehensive Master Plan as of the fall of 2021. The updated plan highlights the importance of recreation options for attracting and retaining residents in the Township. Preservation of natural resources and maintaining a rural aesthetic are key takeaways, and form the basis for many of the recommendations of the plan.

Washtenaw Area Transportation Study - 2045 Long Range Transportation Plan

The 2045 Long Range Transportation Plan is a follow-up to the county-wide non-motorized transportation plan developed for Washtenaw County in 2006. The new plan places a heavy emphasis on equity, safety, environmental impact, and strategic investments, and identifies the use of \$748 million in projects to address the deficiencies in the transportation network. Over \$110 million is earmarked for non-motorized facilities. Non-motorized system gaps are identified as regional priorities.

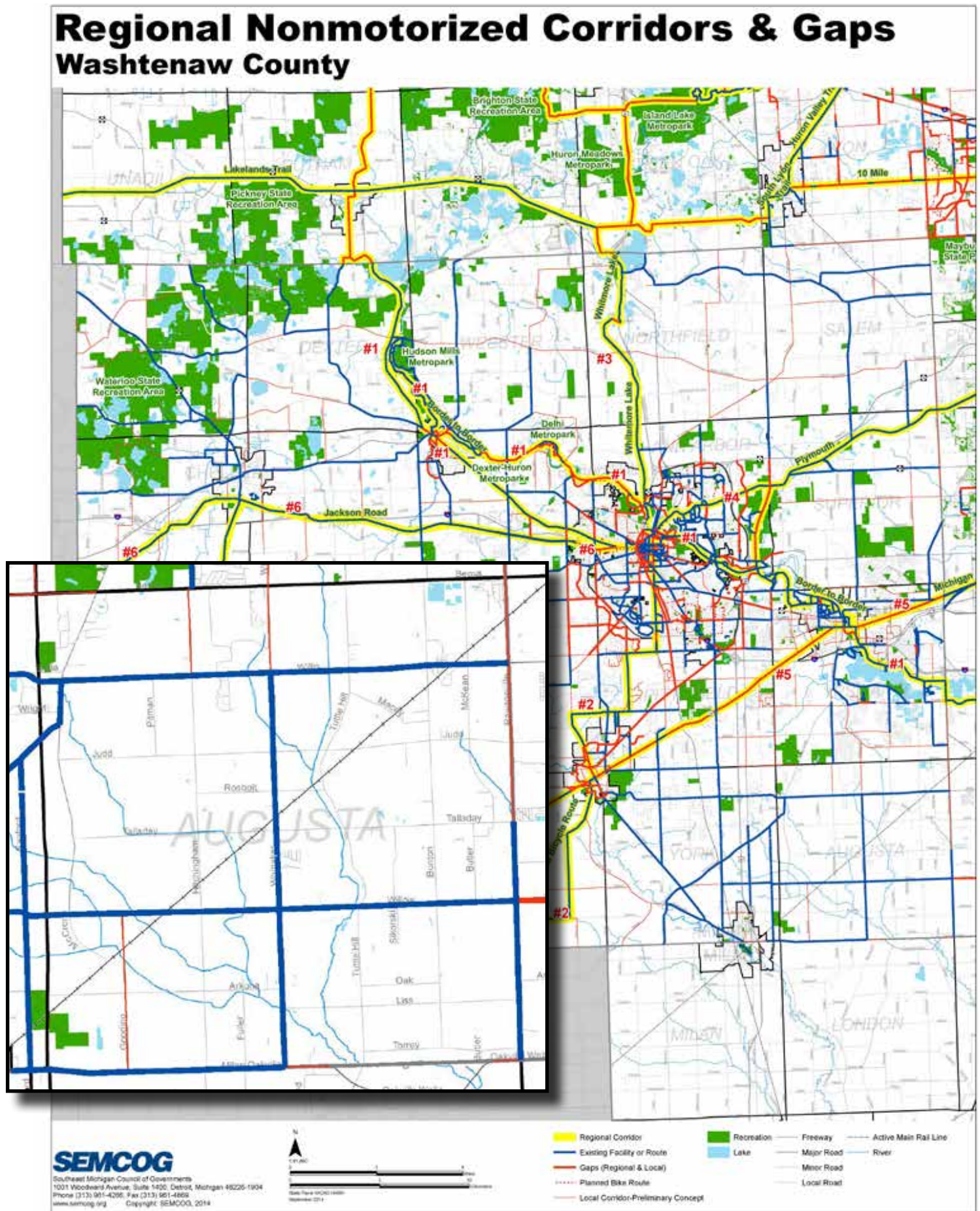
Projects impacting Augusta Township include paving the gravel portions of Bemis Road and improving the intersection of Whittaker at Willis Road. These projects present an outstanding opportunity for Augusta to utilize economies of scale in developing pathways at critical intersections. Township officials should continue to work closely with WATS to identify both the location and form of any desired improvements.

SEMCOG 2040 Regional Transportation Plan for Southeast Michigan / 2014 Bicycle and Pedestrian Travel Plan for Southeast Michigan

The 2040 Regional Transportation Plan is a joint effort between Southeast Michigan Council of Governments (SEMCOG) and the Michigan Department of Transportation (MDOT). The plan provides recommendations for bicycle and pedestrian facilities across 10 regions and incorporating 60 different action items. SEMCOG's larger regional focus places more emphasis on existing non-motorized transportation options, and details several larger trail efforts that overlap efforts in the DLGI plan.

SEMCOG's 2014 Bicycle and Pedestrian Travel Plan identifies a number of existing primary and secondary routes in Augusta Township, including east-west routes on Willis, Willow, and Milan-Oakville, and north-south routes on Whittaker Road, Rawsonville Road, and Sanford Road. At least some of these routes are consistent with those identified by local planning efforts, but do not always take into account on-the-ground challenges and impediments to pathway development. Again, it will be important for Augusta officials to work closely with regional planning authorities to ensure that long-range visions accurately reflect the desires of the community.

Figure 14. SEMCOG Regional Non-motorized Corridors and Gaps



2004 Washtenaw County Comprehensive Plan

Washtenaw County identified a clear and compelling vision for its future and developed a comprehensive set of goals and actions to reach that vision. One such goal is to provide adequate and accessible parks and recreation for all County residents and to develop a regional open space system and county-wide greenway and trail system that preserve important natural features and provide non-motorized transportation opportunities.

The objectives and recommendations set to achieve this goal include:

- Encourage the provision of parks and recreational opportunities in close proximity to County residents
- Leverage the resources of parks and recreation providers in developing regional open space systems and a county-wide greenway and trail system
- Build off established natural resource protection programs, such as the County's Natural Areas Protection Program and local open space initiatives to preserve important natural resources

These goals and objectives were used as a broad guideline for this Recreation Plan.

Washtenaw County Natural Areas Preservation Program

Washtenaw County's Natural Areas Preservation Program (NAPP), a subunit of the Washtenaw County Parks and Recreation Commission, was established in 2000 by the Washtenaw County Board of Commissioners. The goal of the program is to identify, acquire, and manage properties which:

- Preserve the natural and ecological diversity of the County; and
- Complement existing publicly and privately protected lands.

Voters renewed the County-wide, ¼ mill tax that funds the program in 2010; funding will be available through 2021. NAPP is managed by WCPRC, and frequently partners with other land preservation organizations. Since 2001, NAPP has acquired, owns conservation easements on, or has contributed money towards acquisition by conservation partners on a total of 7,460 acres.

NAPP currently does not own any properties in Augusta Township. As high quality natural properties become available, NAPP may be able to provide guidance on acquisition and development options. The Township should partner with NAPP where possible to preserve important properties that face development pressures.

Washtenaw County Parks and Recreation Commission

The Washtenaw County Parks and Recreation Commission (WCPRC) has made significant progress toward developing non-motorized transportation facilities in Washtenaw County. Their efforts have focused on the development of the Border-to-Border Trail (B2B) along the Huron River connecting the cities of Ann Arbor and Ypsilanti.

When completed, the B2B will travel from the northwestern corner of Lyndon Township to the southeastern corner of Ypsilanti Township. For much of its length, the trail follows the Huron River and utilizes trails through several riverside parks, including the Waterloo and Pinckney Recreation Areas, the Mike Levine Lakelands Trail, the Hudson Mills, Dexter-Huron, and Delhi Metroparks, and several smaller municipal parks. It will connect the cities of Stockbridge, Pinckney, Chelsea, Dexter, Ann Arbor and Ypsilanti as well as Ingham, Livingston, and Van Buren Counties. The B2B is a key component of the Iron Belle Trail network.

Beginning in 2009, the WCPRC established the "Connecting Communities" initiative, which provides funds to assist local communities in constructing nonmotorized trails. The program made over \$3 million available for 15 projects in 10 different communities between 2010 and 2014. Additional funds were made available again in 2017 through the Washtenaw County 4-year road millage and once again in 2020. This grant program was used to help fund Augusta's 2020 Trail Feasibility Study.

Appendix A - Public Notices

		6921253	646385
Order Confirmation Ad Order Number 0010152570			
Customer AUGUSTA TOWNSHIP Account: 1000411929 AUGUSTA TOWNSHIP 8021 TALLADAY RD, PO BOX 100 WHITTAKER MI 48190 USA (734)461-6117 FAX: 7344616379 deputyclerk@augustatownship.org		Payor Customer AUGUSTA TOWNSHIP Account: 1000411929 AUGUSTA TOWNSHIP 8021 TALLADAY RD, PO BOX 100 WHITTAKER MI 48190 USA (734)461-6117 PO Number Sales Rep. Joseph Rosa Order Taker Dylan Sonderman Order Source Special Pricing	
Tear Sheets 0 Proofs 0 Affidavits 1 Blind Box Promo Type Materials Invoice Text	TearsheetsCost \$0.00 AffidavitsCost \$10.00	Net Amount \$56.75 Tax Amount \$0.00 Total Amount \$56.75 Payment Method Invoice Payment Amount \$0.00 Amount Due \$56.75	

Ad Schedule

Product Ann Arbor News # Inserts 1 Cost \$42.50 Ad Type MI CLS Liner Pick Up # External Ad # Production Method AdBooker Run Dates 11/04/2021	Placement/Class Announcements POS/Sub-Class Public Notices AdNumber 0010152570-01 Ad Size 1 X 34 li Ad Attributes Color <NONE> Production Notes NOTICEOFPLANAVAILABILITYFORREVIEWAUGUSTACHARTERTOWNSHIPISSEEKINGPUBLICINPUTREGARDINGTH
---	---

Product MLive.com # Inserts 1 Cost \$4.25 Ad Type MI CLS Liner Pick Up # External Ad # Production Method AdBooker Run Dates 11/04/2021	Placement/Class Announcements POS/Sub-Class Public Notices AdNumber 0010152570-01 Ad Size 1 X 34 li Ad Attributes Color <NONE> Production Notes NOTICEOFPLANAVAILABILITYFORREVIEWAUGUSTACHARTERTOWNSHIPISSEEKINGPUBLICINPUTREGARDINGTH
---	---

Confidentiality Notice: This facsimile is intended only for its addressee and may contain information that is privileged, confidential or otherwise protected from disclosure. Dissemination, distribution or copying of this facsimile or the information by anyone other than the intended recipient is prohibited. If you have received this facsimile in error, please notify us immediately and return the facsimile by mail.

11/2/2021 4:34PM



6909870

645936

Order Confirmation

Ad Order Number 0010141182

Customer**AUGUSTA TOWNSHIP**

Account: 1000411929
AUGUSTA TOWNSHIP
8021 TALLADAY RD, PO BOX 100
WHITTAKER MI 48190 USA
(734)461-6117

FAX: 7344616379
deputyclerk@augustatownship.org

Payor Customer**AUGUSTA TOWNSHIP**

Account: 1000411929
AUGUSTA TOWNSHIP
8021 TALLADAY RD, PO BOX 100
WHITTAKER MI 48190 USA
(734)461-6117

PO Number

Sales Rep. Joseph Rosa

Order Taker Dylan Sonderman

Order Source

Special Pricing

Tear Sheets	0	Tear sheets Cost	\$0.00	Net Amount	\$65.00
Proofs	0			Tax Amount	\$0.00
Affidavits	1	Affidavits Cost	\$10.00	Total Amount	\$65.00
Blind Box				Payment Method	Invoice
Promo Type				Payment Amount	\$0.00
Materials				Amount Due	\$65.00
Invoice Text					

Ad Schedule

Product	Ann Arbor News	Placement/Class	Announcements
# Inserts	1	POS/Sub-Class	Public Notices
Cost	\$50.00	AdNumber	0010141182-01
Ad Type	MI CLS Liner	Ad Size	1 X 39 li
Pick Up #		Ad Attributes	
External Ad #		Color	<NONE>
Production Method	AdBooker	Production Notes	
Run Dates	Sort Text	NOTICE OF PUBLIC HEARING AUGUSTA CHARTER TOWNSHIP IS SEEKING PUBLIC INPUT REGARDING THE 2022 2026 PAR	
11/28/2021			

Product	MLive.com	Placement/Class	Announcements
# Inserts	1	POS/Sub-Class	Public Notices
Cost	\$5.00	AdNumber	0010141182-01
Ad Type	MI CLS Liner	Ad Size	1 X 39 li
Pick Up #		Ad Attributes	
External Ad #		Color	<NONE>
Production Method	AdBooker	Production Notes	
Run Dates	Sort Text	NOTICE OF PUBLIC HEARING AUGUSTA CHARTER TOWNSHIP IS SEEKING PUBLIC INPUT REGARDING THE 2022 2026 PAR	
11/28/2021			

Confidentiality Notice: This facsimile is intended only for its addressee and may contain information that is privileged, confidential or otherwise protected from disclosure. Dissemination, distribution or copying of this facsimile or the information by anyone other than the intended recipient is prohibited. If you have received this facsimile in error, please notify us immediately and return the facsimile by mail.

10/30/2021

9:38AM



Parks Committee

Meetings: October 29, 2021 at 10:00 a.m.

Meeting Location: Township Hall

POSITION	NAME
Chair	Brian Shelby supervisor@augustatownship.org
Vice Chairperson	Belynda Domas deputyclerk@augustatownship.org
Secretary	Dan Woolf mhlght@aol.com
Board Liaison	Susan Burek treasurer@augustatownship.org
Members	Sylvia Taylor smtaylor@umich.edu

[NOTICE THE DRAFT PARKS & RECREATION MASTER PLAN 2022-2026 IS AVAILABLE FOR REVIEW](#)

[Augusta Charter Township Parks & Recreation Master Plan 2022 – 2026 \(Draft\)](#)

[NOTICE OF PUBLIC HEARING DECEMBER 14, 2021 AT 7:00PM FOR THE PARKS & RECREATION MASTER PLAN 2022 – 2024](#)

[Trail Feasibility Study](#)

Augusta Township Parks & Recreation Master Plan Survey

Thank you for taking the time to help us better understand the recreation needs for Augusta Township. The results of this survey will be used to inform the recommendations of the Township's first Recreation Plan. Your responses will have a direct impact on the future development of parks, trails, and recreation services in the community.

The survey should take less than ten minutes to complete. Please note that your responses are completely confidential. The survey will remain open for responses until **midnight on Sunday, October 17, 2021**. If you prefer to complete a paper version of the survey, hard copies are available at the Township Offices. **Completed hard copies must be submitted by Friday, October 15**, to be included in the survey results.

SURVEY COMPLETED – THANK YOU!

Meeting Notes:

[10-29-2021 Parks & Recreations Steering Committee](#)

[09-09-2021 Parks & Recreations Steering Committee](#)

Contact

PO Box 100 Whittaker,
MI 48190-0100

(734) 461-6117

(734) 256-1984

Hours of Operation

Mon-Thu: 9:00am-5:00pm
Friday: Closed
Closed Weekends and Holidays
(see bottom of meeting schedule)

Legal

© 2020 Augusta Charter Township.
All Rights Reserved

Website Design by the Shumaker
Technology Group



Appendix B - Recreation Plan Committee Recommendation to Adopt Plan

From: clerk

Sent: Sunday, November 28, 2021 11:46 AM

To: clerk <clerk@augustatownship.org>; David Hall <DHall@augustatownship.org>; Deborah Fuqua-Frey <DFuqua-Frey@augustatownship.org>; supervisor <supervisor@augustatownship.org>; treasurer <treasurer@augustatownship.org>; Trustee Christopher Ortiz <cortiz@augustatownship.org>; Trustee Linda Adams <ladams@augustatownship.org>

Cc: Heather Rowland <AdminAssistant@augustatownship.org>; deputysupervisor@augustatownship.org

Subject: Dec 14 BOT Agenda Item Request - Resolution to Adopt Parks & Recreation Master Plan

TO: Augusta Charter Township Board Of trustees

FROM: Parks Committee

DATE: December 14, 2021

RE: Motion to adopt the 2022 – 2026 Augusta Township Parks and Recreation Master Plan

The Parks Committee has reviewed the 2022 – 2026 Augusta Charter Township Parks and Recreation Master Plan for completeness and accuracy. The plan meets the guidelines set by the Michigan Department of Natural Resources, and accurately reflects current conditions and future plans for park and trail development in the Township. Most importantly, the plan takes into consideration the desires and needs of the community as communicated to us by the community survey and other forms of public input described in the appendices.

The Parks Committee therefore recommends the Board of Trustees formally adopt the 2022 – 2026 Augusta Charter Township Parks and Recreation Master Plan following the Public Hearing on December 14, 2021.

Chair – Brian Shelby
Vice Chair- Belynda Domas
Secretary – Dan Woolf
Board Liaison – Susan Burek
Member – Sylvia Taylor

Appendix C - Minutes of Public Hearing

Augusta Charter Township
8021 Talladay Road
Whittaker, MI 48190

Board of Trustees Meeting Minutes

December 14, 2021, 7:00 p.m.

1. Virtual Meeting called to order by Shelby at 7:00 p.m.
2. Roll Call: Present: Adams, Gonczy, Fuqua-Frey, Hall, Ortiz (7:13 arrived), and Shelby. Absent: Burek.
3. Motion by Shelby, 2nd by Hall to approve the agenda. Motion passed.
4. Public comment opened at 7:03 p.m. public comment closed at 7:03 p.m.
5. Motion by Shelby, 2nd by Gonczy to open the Public Augusta Charter Township Parks & Recreation Master Plan for 2022-2026 Hearing at 7:04 p.m. Motion Passed.
6. Motion by Gonczy, 2nd by Shelby to approve Resolution 21-28, Resolution to adopt the Augusta Charter Township 2022-2026 Parks and Recreation Master Plan. Roll Call: Aye; Adams, Gonczy, Hall, Shelby. Nay; Ortiz, Fuqua-Frey. Absent; Burek. Motion passed.
7. Motion by Shelby, 2nd by Gonczy to close the Public Parks & Recreation Master Plan for 2022-2026 Hearing and return to regular Board meeting at 7:21 p.m. Roll Call: Aye; Adams, Fuqua-Frey, Gonczy, Hall, Ortiz, Shelby. Nay; none. Absent; Burek. Motion passed.

2021-12-14 BOT MTG

FINAL

VIRTUAL MTG

8. Motion by Gonczy, 2nd by Adams to approve the Draft Board of Trustees Meeting Minutes from 11/23/2021. Roll Call: Aye; Adams, Fuqua-Frey, Gonczy, Ortiz, Hall, Shelby. Nay; none. Absent; Burek. Motion passed.
9. Motion by Gonczy, 2nd by Fuqua-Frey to approve paying employee Heather Rowland, Administrative Assistant, who is off work due to illness, ten days of her 2022 paid time off, early, on her December 2021 paycheck. Roll Call: Aye; Adams, Fuqua-Frey, Gonczy, Ortiz, Hall, Shelby. Nay; none. Absent; Burek. Motion passed.
10. Motion by Shelby, 2nd by Ortiz to approve Resolution 21-29, Resolution to Establish a Township General Appropriations Act of Augusta Charter Township for the Budget Year Ending March 31, 2023. Roll Call: Aye; Adams, Fuqua-Frey, Gonczy, Ortiz, Shelby, Hall. Nay; none. Absent; Burek. Motion passed.
11. Motion to by Gonczy, 2nd by Fuqua-Frey to approve Resolution 21-30, Resolution to support Senate Bill 705 to amend the Open Meetings Act to maintain the ability to meet virtually for all township bodies thru March 31, 2022. Roll Call: Aye; Adams, Fuqua-Frey, Hall, Shelby, Gonczy. Nay: Ortiz. Absent: Burek. Motion passed.
12. Motion by Shelby 2nd by Hall to approve UIS SCADA Quote #211826R for \$8,325.00, to upgrade Lincoln lift station located at Willis/Whittaker Road. Roll Call: Aye; Adams, Fuqua-Frey, Gonczy, Hall, Shelby. Nay; Ortiz. Absent; Burek. Motion passed.
13. Motion by Shelby, 2nd by Adams to approve OHM proposal of \$34,000 for professional engineering design services related to the Augusta Township's water supply main on Torrey Road. Roll Call: Aye; Adams, Fuqua-Frey, Gonczy, Hall, Ortiz, Shelby. Nay; none. Absent; Burek. Motion passed.

14. Motion by Shelby, 2nd by Gonczy to approve interviewing candidates for a fulltime position, cashier and zoning duties. The candidate will be presented to the Board of Trustee's for approval. Roll Call: Aye; Adams, Fuqua-Frey, Gonczy, Hall, Ortiz, Shelby. Nay; none. Absent; Burek. Motion passed.
15. Motion by Shelby, 2nd by Fuqua-Frey to approve the Supervisor's Report and November Utility Report provided by F&V Operations. Motion passed.
16. Motion by Gonczy, 2nd by Shelby to approve Warrants 24676-24742. Roll Call: Aye; Adams, Fuqua-Frey, Gonczy, Hall, Ortiz, Shelby. Nay; none. Absent; Burek. Motion passed.
17. Motion by Shelby, 2nd by Adams to approve the Clerks Report as given. Motion passed.
18. Motion by Gonczy, 2nd by Shelby to add \$14,074.13 determined by Washtenaw Country Trial Court to property T-20-11-100-006, 9423 Macey Road, as specified on the Order Finding Contempt from Washtenaw County Circuit Court that states "costs that are awarded and not paid by Defendant shall become an executable lien upon the property in the same manner as a special assessment". Roll Call: Aye; Adams, Fuqua-Frey, Gonczy, Hall, Ortiz, Shelby. Absent; Burek. Motion passed.
19. Motion by Shelby, 2nd by Ortiz to approve the Treasurer's Report as given. Motion passed.
20. Motion by Gonczy, 2nd by Adams to approve Fire Chief Music recommendation to hire the following new Firefighters; Hope Wilkerson, David Box and Mike Wasniewski. Roll Call: Aye; Adams, Gonczy, Hall, Fuqua-Frey, Ortiz, Shelby. Nay; none. Absent, Burek. Motion passed.
21. Motion by Adams, 2nd by Shelby to accept the Fire Department Report as given. Motion passed.

22. Motion by Shelby, 2nd by Gonczy to accept the Urban County Report as given. Motion passed.
23. Public Comment Opened at 8:14 p.m. Closed at 8:14 p.m.
24. Motion by Shelby, 2nd by Adams to adjourn. Motion Passed.
25. Board of Trustees Meeting adjourned at 8:17 p.m.

Respectfully submitted:

Brian Shelby 1/27/22
Brian Shelby, Supervisor Date

Kimberly Gonczy 1/27/2022
Kimberly Gonczy, Clerk Date

2021-12-14 BOT MTG

FINAL

VIRTUAL MTG

Appendix D: Township Board Resolution

STATE OF MICHIGAN
COUNTY OF WASHTENAW
AUGUSTA CHARTER TOWNSHIP

RESOLUTION TO ADOPT THE AUGUSTA CHARTER TOWNSHIP
2022-2026 PARKS AND RECREATION MASTER PLAN

RESOLUTION 21-28

WHEREAS, Augusta Charter Township has undertaken the development of its five-year recreation plan which describes the community's physical and social characteristics, existing parks and recreation facilities, and the desired actions to be taken to improve the parks and recreation facilities during the period between 2022 and 2026; and

WHEREAS, the Augusta Charter Township Park Committee reviewed the 2022 – 2026 Parks and Recreation Master Plan for completeness and accuracy; and

WHEREAS, the 2022 – 2026 Parks and Recreation Master Plan's goals and objectives were developed in response to needs and deficiencies identified via a Community Survey made available to the public from September 14 to October 17, 2021; and

WHEREAS, the 2022 – 2026 Parks and Recreation Master Plan has been made available by Augusta Charter Township for public review in the manner required by law and all comments from the public have been considered by the Augusta Charter Township Park Committee; and

WHEREAS, the plan was developed for the benefit of the entire community; and

NOW, THEREFORE, BE IT RESOLVED that the Augusta Charter Township Board recommends the adoption of the Augusta Charter Township 2022 – 2026 Parks and Recreation Master Plan.

A roll-call vote on the foregoing resolution was taken and was as follows:

YES: Adams, Gonczy, Hall, Shelby

NO: Ortiz, Fuqua-Frey

ABSENT: Burek

ABSTAIN: None

Resolution 21-28 was declared adopted.

BY ORDER OF THE TOWNSHIP BOARD,



Brian Shelby, Supervisor



Kimberly Gonczy, Clerk

21-28 RESOLUTION TO ADOPT THE 2022-2026 PARKS & RECREATION MASTER PLAN

Final

CLERK'S CERTIFICATE

The undersigned, being the duly qualified and acting Clerk of the Augusta Charter Township, Washtenaw County, Michigan, hereby certifies that (1) the foregoing is a true and complete copy of a resolution duly adopted by the Township Board at a regular meeting held on December 14, 2021 at which meeting a quorum was present and remained throughout, (2) the original thereof is on file in the records in my office, (3) the meeting was conducted, and public notice thereof was given, pursuant to and in full compliance with the Open Meetings Act (Act No. 267), Public Acts of Michigan, 1976, as amended), and (4) minutes of such meeting were kept and will be or have been made available as required thereby.



Kimberly Gonczy

Augusta Charter Township Clerk

DATED: December 14, 2021

Appendix E: Letters of Transmittal



Carlisle | Wortman
ASSOCIATES, INC.

117 NORTH FIRST STREET SUITE 70 ANN ARBOR, MI 48104 734.662.2200 734.662.1935 FAX

January 31, 2022

Tyler Klifman
Regional Review Office
Southeast Michigan Council of Governments
1001 Woodward Avenue, Suite 1400
Detroit, Michigan 48226

Dear Mr. Klifman:

The Augusta Charter Township Board of Trustees adopted the attached Parks & Recreation Master Plan at a meeting held on December 14, 2021. The plan has been uploaded to the MDNR website for their review and approval. The plan will be subject to future review and updates as deemed necessary by the Board of Trustees and the Parks Committee.

Please feel free to contact the Augusta Township or myself if you have any comments regarding this plan.

Thank you for your consideration,

CARLISLE/WORTMAN ASSOC., INC.

Chris Nordstrom, PLA, ASLA
Landscape Architect

cc. Bryan Shelby, Township Supervisor
Belynda Domas, Deputy Clerk

Richard K. Carlisle, *President* Douglas J. Lewan, *Executive Vice President* John L. Enos, *Principal*
David Scurto, *Principal* Benjamin R. Carlisle, *Principal* Sally M. Elmiger, *Principal* Craig Strong, *Principal* R. Donald Wortman, *Principal*
Laura K. Kreps, *Senior Associate* Paul Montagno, *Senior Associate* Megan Masson-Minock, *Senior Associate*



Carlisle | Wortman

ASSOCIATES, INC.

117 NORTH FIRST STREET SUITE 70 ANN ARBOR, MI 48104 734.662.2200 734.662.1935 FAX

January 31, 2022

Coy Vaughn
Director
Washtenaw County Parks & Recreation
Parks Administrative Offices
PO Box 8645
Ann Arbor, Michigan 48107

Dear Mr. Vaughn:

The Augusta Charter Township Board of Trustees adopted the attached Parks & Recreation Master Plan at a meeting held on December 14, 2021. The plan has been uploaded to the MDNR website for their review and approval. The plan will be subject to future review and updates as deemed necessary by the Board of Trustees and the Parks Committee.

Please feel free to contact the Augusta Township or myself if you have any comments regarding this plan.

Thank you for your consideration,

CARLISLE/WORTMAN ASSOC., INC.

Chris Nordstrom, PLA, ASLA
Landscape Architect

cc. Bryan Shelby, Township Supervisor
Belynda Domas, Deputy Clerk

Richard K. Carlisle, *President* Douglas J. Lewan, *Executive Vice President* John L. Enos, *Principal*
David Scurto, *Principal* Benjamin R. Carlisle, *Principal* Sally M. Elmiger, *Principal* Craig Strong, *Principal* R. Donald Wortman, *Principal*
Laura K. Kreps, *Associate* Paul Montagno, *Associate*

Appendix F: Public Input

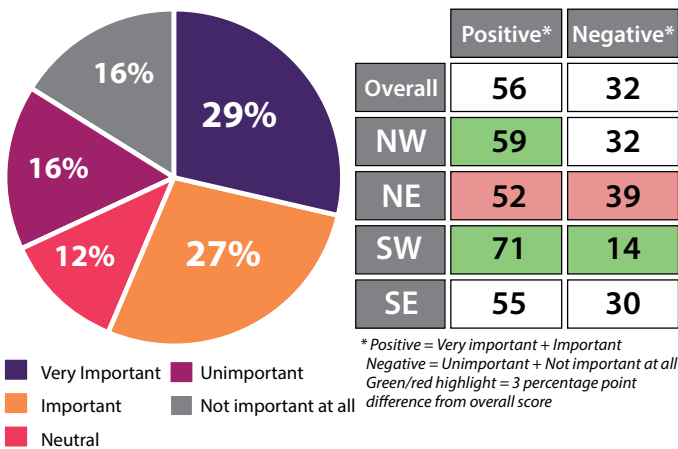
Augusta Township Parks & Recreation Plan Survey Data

As part of the 2022 - 2026 Augusta Charter Township Recreation Plan process, an online survey was made available to residents from September 14 through October 17, 2021. The survey was advertised on the Township's web page and on the Township's social media accounts. A hard copy of the survey was made available at the Township Offices for individuals who did not wish to fill out the form electronically.

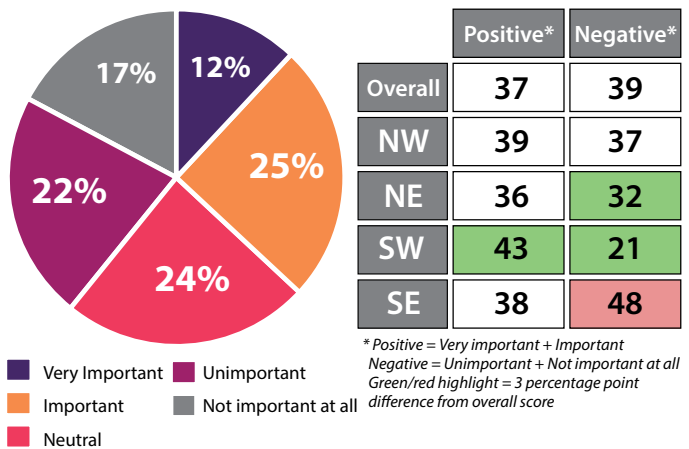
A total of 141 responses were received. The following pages provide the raw results; an analysis of the survey results is provided in **Chapter 4: Needs Analysis and Public Participation**. Note that for open-ended questions, all responses are provided verbatim, and have not been corrected for spelling errors, grammar, or other issues. Any names, address, or other identifiable information provided in a response has been redacted.

1. How important are the following items to you and your family?

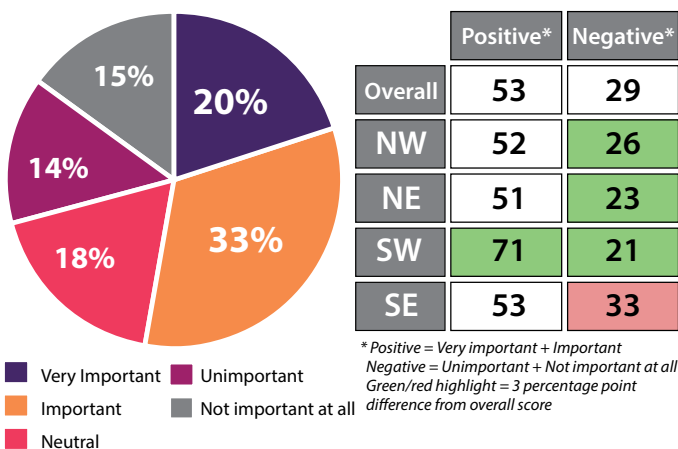
a. Acquiring and developing new parks and recreation facilities



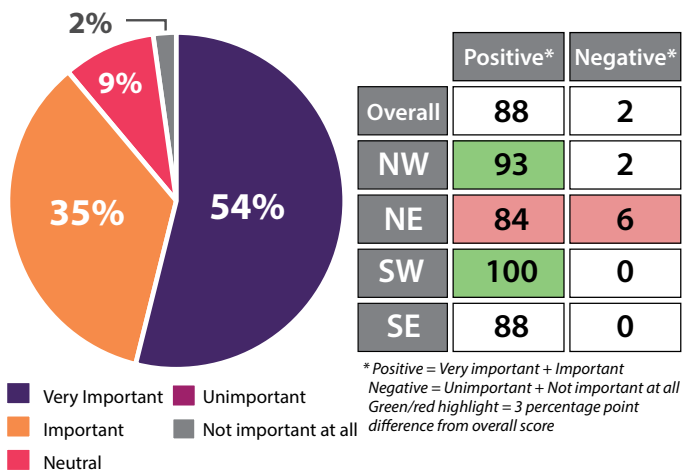
b. Access to active-use facilities (e.g. soccer, football, baseball, tennis, etc.)



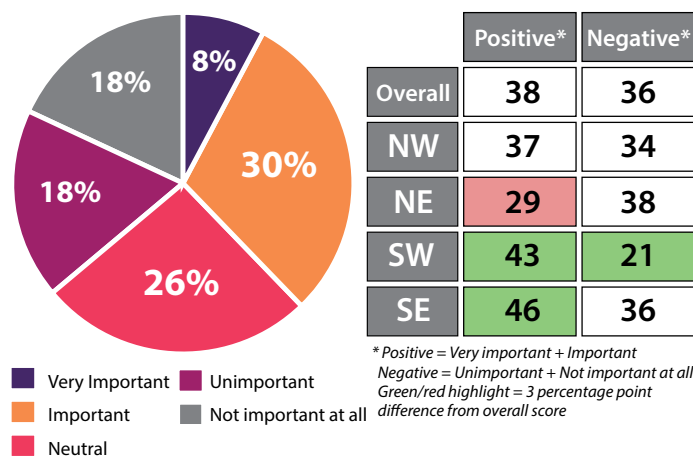
c. Access to passive-use facilities (playgrounds, sitting areas, pavilions, etc.)



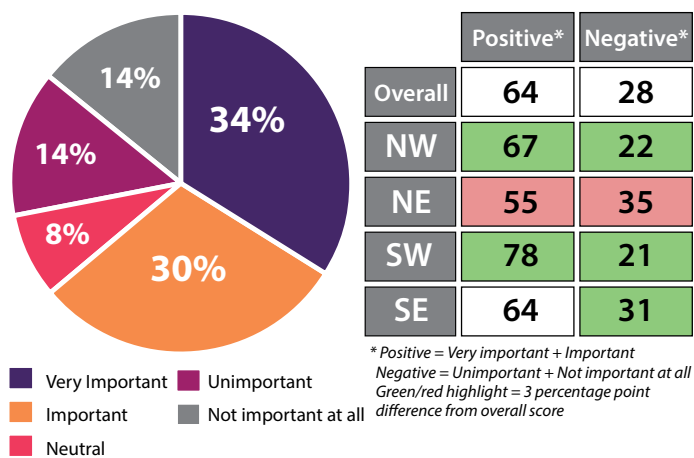
d. Protecting natural resources



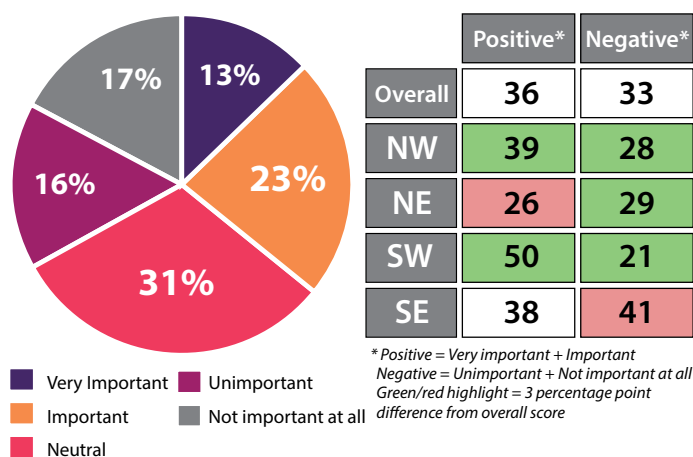
e. Access to picnic facilities



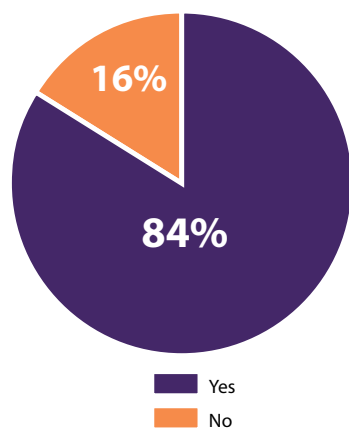
f. Access to paths and trails



g. Access to recreation programming (e.g. special events, classes, sports leagues, etc.)



2. Do you or your family visit neighboring community, county, state, or other regional recreation facilities?



OTHER RESPONSES

- Romulus Rec Center
- Canton parks
- Ann Arbor parks
- Ann Arbor trails
- Kensington metro park-/ Argo canoe livery

- No one's over in Waterloo for fishing
- Wayne county crosswinds marsh park
- Plymouth and Canton Parks
- Ann Arbor nature arboretums (Nichols) as well as Gallup Park

3. If yes, which facilities do you visit?

Activity	#	%
Washtenaw County Parks (Rolling Hills County Park, Border-to-Border Trail, Swift Run Dog Park, etc.)	94	80%
Ypsilanti Township Parks & Trails (Hewen's Creek Preserve, Ford Heritage Park, Ford Lake Park, etc.)	72	61%
Michigan State Parks (Maybury, Sterling, Waterloo, etc.)	68	58%
Huron-Clinton Metroparks (Lower Huron, Willow, Oakwoods, etc.)	63	53%
City of Milan Parks (Vern Campbell Park, Wilson Park, etc.)	57	48%
Sumpter Township Parks (Crosswinds Marsh, Banotai Park, etc.)	53	45%
Pittsfield Township Parks (Lillie Park, Pittsfield Preserve, etc.)	40	34%
Van Buren Township Parks (Harris Park, Van Buren Park, etc.)	20	17%
Other (Please Specify)	11	9%

- Ash Twp - Unity park, Ash Carleton park; Brownstown - Thorn park
- county fram park, gallop park, argo pond, flimming creek and parker mill

4. What types of activities do you or your family regularly participate in? Choose all that apply.

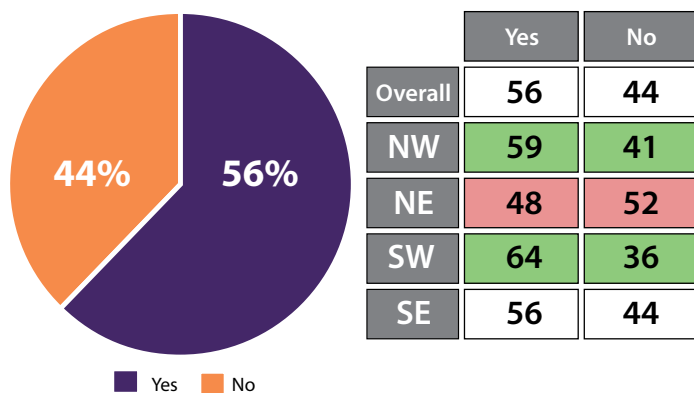
Activity	Number	Percent
Walking & trail sports	81	62%
Farmer's market	68	52%
Nature activities	58	44%
Biking (on road or trail)	56	43%
Dog park / dog walking	54	41%
Swimming	51	39%
Canoeing / kayaking	51	39%
Outdoor park activities / playground	49	37%
Field sports (baseball, football, soccer, etc.)	41	31%
Hunting or fishing	40	31%
Picnicking	40	31%
Off-trail / rustic hiking	36	27%
Sledding	36	27%
Boating	30	23%
Movie nights / concerts in the park	26	20%
Golf	24	18%

Activity	Number	Percent
Senior programs	21	16%
Horseback riding	20	15%
Educational programming	20	15%
Community gardening	19	15%
Court sports (tennis, pickleball, basketball, etc.)	19	15%
Mountain biking	18	14%
Painting or photography	17	13%
Snowmobiling	17	13%
Figure skating / hockey	17	13%
Geocacheing	15	11%
Kite flying	11	8%
Cross country or downhill skiing	11	8%
Skateboarding	9	7%
Waterskiing	7	5%
Paint ball	3	2%
Other (Please specify)	9	7%

OTHER RESPONSES

- Trail running
- Radio Control Aircraft
- Youth dance classes
- Splash pads
- Running trails
- tecumseh civic center
- Vocal musicDisc golf
- Camping

5. Should Augusta Township acquire land for park development?

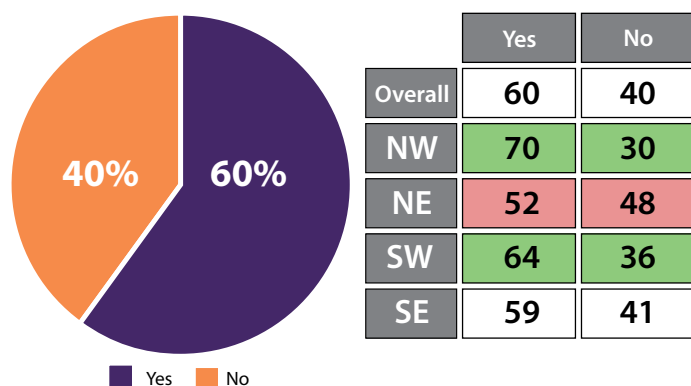


6. If the Township developed a park, which of the following park amenities would you like to see? Choose all that apply.

Activity	#	%
Rustic walking paths (e.g. crushed limestone)	61	79%
Multi-use walking/biking paths (paved)	54	70%
Natural areas	45	58%
Picnic areas & pavilions	43	56%
Playground structures	37	48%
Fitness / exercise trails	32	42%
Outdoor swimming pool	30	39%
Dog park	28	36%
Splash pad	27	35%
Sled hills	27	35%
Mountain biking trails	24	31%
Nature centers	21	27%
Swimming beaches	21	27%
Indoor gym & fitness facility	20	26%
Fishing docks	18	23%
Ice skating rink	17	22%
Soccer fields	17	22%
Basketball courts	16	21%

Activity	#	%
Horse trails	16	21%
Disc golf	15	19%
Cross-country ski trails	15	19%
Amphitheater / stage	14	18%
Workout rooms	13	17%
Veterans Memorial	12	16%
Indoor theater	11	14%
Baseball fields	11	14%
Skate park	10	13%
Pickleball courts	10	13%
Sports training center (batting cages, indoor track, etc.)	9	12%
Driving range	9	12%
Golf course	9	12%
Sand volleyball courts	8	10%
Tennis courts	8	10%
Boat ramps	7	9%
Field house / sports dome	5	6%
Other (Please specify)	0	0

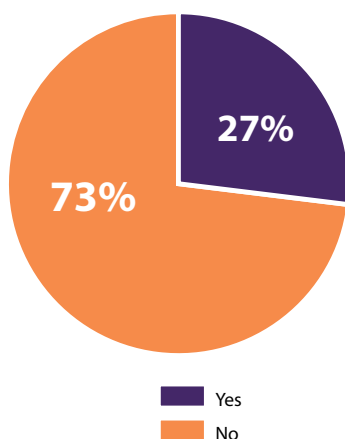
7. Should Augusta develop a trail system within the Township?



8. If yes, are there any specific routes you'd like to see developed?

- any
- Current park in Willis if enough room
- Ones that remove as little natural resources as possible.
- Something that is rustic and doesn't damage the woods and waterways that are there already
- I would like a bike path on Willis road from Rawsonville to Stoney Creek and Whittaker road from Bemis to Talladay.
- Lincoln pines to the Lincoln schools
- Around Lincoln schools area would be awesome!
- Connecting the Bellemeade subdivision to the surrounding areas with bike paths! A trail running towards Hewens creek park would be perfect! The subdivisions around that area already have the bike path system.
- Willis, Whittaker, bemis, hitchingham
- path along paint creek
- Lincoln schools to Kroger on Whittaker or to library
- Just connect to border to border trails
- Yes Whittaker rd
- Near Lincoln school
- I would really like to see trails that could connect pedestrians on the rural roads to the school system.
- How about 5 separate trails, one in each corner area of the township and one in the center, with the possibility of them joining each other. I myself would NOT be interested in a trail that goes around the high school area. I like walks in nature, woods, marshes, and water features.
- Paths that connected subdivisions to the school campus.
- Trail along Willis and Whittaker near the schools so children in nearby neighborhoods can walk to school safely
- Routes along major roads so they can be biked safely: Whittaker, Bemis, Willis, Stony Creek, etc.
- Just something to avoid walking on the roads
- Connect Lincoln pines to other areas safely
- downtown willis

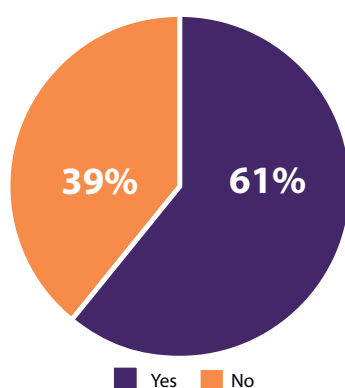
9. Do you take advantage of recreation programming (e.g. sports leagues, senior activities, enrichment classes, etc.) provided by Washtenaw County, Ypsilanti Township, the Lincoln Golden Ages Senior Center, or other providers?



10. If yes, what program(s) do you participate in, and who offers the program?

- Grandchildren play soccer for Milan schools and I use Rolling Hills Lazy River for early morning walking exercise for seniors during the summer
- Swimming at Lincoln HS
- Saline Senior Center & Milan Senior Center - walking groups, meditation, enrichment classes
- Lincoln seniors, wash. Co. Programs
- Swimming through Lincoln Rec, nature programming through washtenaw county, Hike it Baby Ann Arbor
- Kid activities gymnastics and soccer
- Karate - ypsilanti community center
- LAYA sports, Milan Flyers radio control training and activities
- Soccer
- Have taken exercise classes in the past at Lincoln
- Ann Arbor and Ypsilanti
- Ann Arbor volleyball league
- Many programs offered my Ypsilanti township and Lincoln schools LAB
- Tennis from Ypsilanti Township
- Senior center volunteer
- Ypsilanti township watercolor
- Saline Rec
- Bingo Milan senior center
- cardio drumming, water aerobics.. lincoln
- Milan Seniors for Healthy Living
- Swimming, dance, soccer
- Dance class, cooking class, & swimming lessons
- Youth dance (preschool) Pittsfield township
- ann arbor ymca fencing, Milan library events and programs
- milan senior center programs

11. Should Augusta Township partner with Washtenaw County to offer programming in the community?

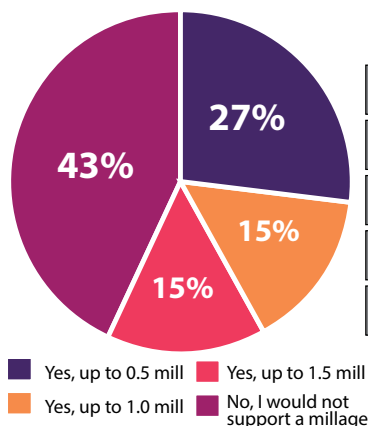


	Yes	No
Overall	61	39
NW	60	40
NE	68	32
SW	62	38
SE	61	39

12. What types of programs would you like to see offered? Check all that apply.

Activity	#	%
Nature education (stargazing, bird watching, plant ID, etc.)	49	63%
Special events & festivals	43	55%
Youth sports & fitness	38	49%
Adult sports & fitness	36	46%
Senior (50+) programs & trips	34	44%
Aquatics (e.g. swimming lessons, exercise, etc.)	33	42%
Skills workshops (e.g. computer education, accounting, etc.)	29	37%
Summer camps	26	33%
Other (Please Specify)	3	4%

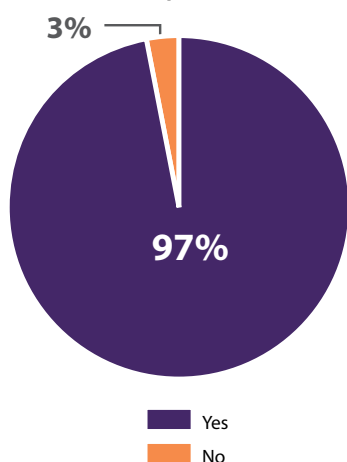
13. Would you support a millage to develop and administer parks and trails in Augusta Township?



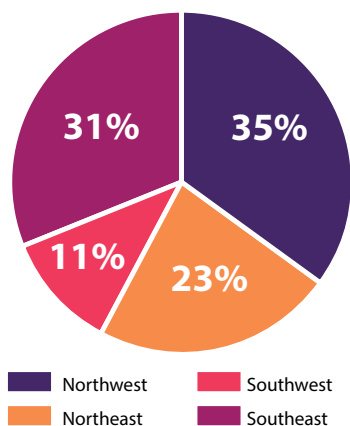
	Yes, 0.5	Yes, 1.0	Yes, 1.5	Yes, at some level*	No
Overall	27	15	15	57	43
NW	30	11	22	63	37
NE	21	14	17	52	48
SW	33	33	0	66	33
SE	28	13	13	54	46

*Shows the total percentage of participants who are in favor of some form of millage. It assumes that a participant who is in favor of a higher millage would be in favor of a lower millage if that were the only option available.

14. Are you an Augusta Township resident? (required)



15. Which quadrant do you live in?



16. Which of the following categories best describe your household? Choose all that apply.

Activity	#	%
2 persons or more, no children in the household	42	32%
2 persons or more, with children under 13 years	35	27%
With seniors 65+	27	21%
2 persons or more, with children 13 to 18 years	26	20%
Without seniors	17	13%
Senior citizen (65+) living alone	5	4%
Live alone, under the age of 65	4	3%

17. Are there any other recreation-related issues you would like to bring to our attention?

- yoga, meditation and enrichment courses (language lessons, computer classes, health courses)
- It is not safe to have recreation areas when we don't have police to patrol them.
- The facilities at Lincoln Schools are available for use. The township should promote those facilities and programs rather than investing in something that's not needed.
- Why can't you utilize the finances we already pay to develop a small park somewhere. I can never understand how we have a community with absolutely nothing. No parks, no police, no downtown no events nothing. Absolutely nothing. I pay any Normas amount of property taxes we actually have more residen
- Please don't waste our money with a parks dept. Look around.....parks and Recs around the county are failing and bleeding out money..
- Access to a recraton center would be great!
- No pot facilities!
- I think that recreational facilities are an asset to the township and we need something nice for people to be happy about besides trailer parks, Fokker generals or solar panels.
- Walkways similar to Saline would be great
- We need other things long before we need a park or walking trails.
- Amenities should be made accessible to visually impaired residents or with input from said residents
- Heavy nature conservation and preservation of existing historic structures

- I feel it is a waste of our tax dollars to build a park and crosswalks that no one in the community would use. It will be used by out of community members that want a country feel. We are farm and rural community that have no desire to turn into city like conditions.
- We have a problem with littering and disrespecting nature. It would be great to increase nature protection/preservation and education
- Township needs accessible recreation for persons with disabilities as well as persons with children that are not park of the schools and that are open to all resident s of the township
- fix the drainage problems with the roads and ditches
- Yeah not enough fishing opportunities for my nephews
- No
- It is a great idea to pair with Washtenaw country recreation because they already have the infrastructure set up to promote and manage these activities.
- Off road vehicles are very popular in our area and are used on the roads constantly. A legal and safe alternative should be considered.
- What about the Kiwanis Park in Willis
- I just don't think the township or the people of Augusta can afford it right now. People are struggling right now. There are more important things that need done in Augusta township!
- No. We moved out in the country for it to be country. If we wanted city amenities we would have stayed in Ypsilanti Township.
- I do NOT support acquiring new land, use what Washtenaw already has. The school is a wonderful resource for the community! We have already supported a large millage for the school, that's enough!
- We can use the Lincoln School facilities, of which we already passed a very large millage for to enjoy for the community. There is no need to use eminent domain on more land for this, which would duplicate what we already have!
- Nope
- Trips to the casino
- We have 2 parks very, very close to us already, one bordering our township .
- With the antidevelopment attitude of the Township Board why are they considering spending money to attract more people to the Township Concentrate on fixing our roads and bridges.
- Keep our township rural; Attract new residents with a park that has playground equipment for children
- Rolling Hills & Hewens Creek are very close We don't need another within a mile or two
- Pay down debt and reduce water prices!!!!
- Need sidewalk system to connect neighborhoods
- No
- preserve natural lands
- preserve land. preserve agricultural land
- biking or waling on our roads is unsafe. we have no facility for the shooting sports. offer safety training
- Thank you! Now how about we pay for some Police protection.
- This would be an amazing addition for the community!
- Thanks for sending this out! I am excited to see what happens!
- There are so many other needs in the twp. We have trails/ paths already. Focus on roads/drainage.
- Not a resident but twp employee. I would use these if available
- I moved to Augusta to enjoy the country. I wouldn't have moved from Ypsilanti TWP if I wanted these
- There are plenty of places around here to do any of these activities. No need to acquire new space!
- Little advertising of events... Need emails lists, flyers, website and social media posts, etc.
- I am not interested in raising taxes anymore than they' currently are for new buyers in the area
- #1: Biking or walking on our paved roads is not safe. People will still continue to do both. How can we make it safer? #2: We have no facility for the shooting sports. One that offers safety training would be a plus.
- Augusta Township needs to presserve the land it has. AR property needs to remain as is. Any industrial uses needs to be zoned commercial or industrial. Alternative energy needs to be on industrial property. Alternative energy also nees to pay a higher property tax. If alternative energy is allowed on AR property we need to change the set back to 1800 feet.

- I would like to see the township preserve the natural lands that it has. Agricultural property needs to support agriculture, not a “solar farm”. This is industrial and should not be mingled with residences. Alternative energy should only be on industrial property. If alternative energy is put in there should be at least an 1800 foot setback. Agricultural land that was sold by farmers to homeowners should not support industrial undertakings that negatively impact homeowners.

Appendix G: Concept Plans

Willis Road Preserve Concept Plan - Details

Augusta Charter Township Washtenaw County, Michigan

- A: Gravel parking lot. Four or five spaces to be added along Willis. At least one space should be paved and marked for accessible parking. Due to high speeds and poor visibility along Willis Road, the Washtenaw County Road Commission (WCRC) will likely require an acceleration/deceleration lane.
- B: Gathering area / informational kiosk
- C: Rustic trails. The short-term plan for the preserve would be to add six-foot wide mown paths. To meet the Americans with Disabilities Act (ADA) standards, at least 20% of the pathway should be "stable and slip-free". Crushed limestone meets that standard, and would allow disabled visitors to freely travel and enjoy the site.
- D: Drain access / overlook. A simple pathway or landing would allow access the John Bird drain, providing an educational opportunity for students. Any adjustments to the drain would require approval from the Washtenaw County Water Resources Commission (WCWRC). Long term, a seating area for outdoor classroom activities could be developed outside of the drain easement boundary.
- E: Future path and drain crossing. The Township will need to coordinate with the WCWRC and WCRC for crossing point over the drain easement. Pulling the crossing close to the road edge eliminates the need for a bridge and greatly reduces the project cost.
- F: Future intersection development. Township should coordinate with the WCRC to improve the intersection and allow safe passage to and from the school campus.

Other features: Benches should be designed to meet ADA standards. Adding a concrete pad or crushed limestone pad allows wheelchair-bound visitors to interact with their able-bodied friends and family.

Example: Parking lot, North Hydro Park, Ypsilanti Township, MI



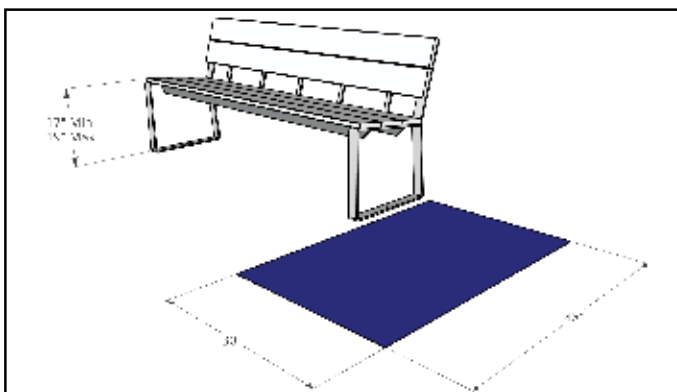
Example: Outdoor classroom / gathering area, Shelby County, AL

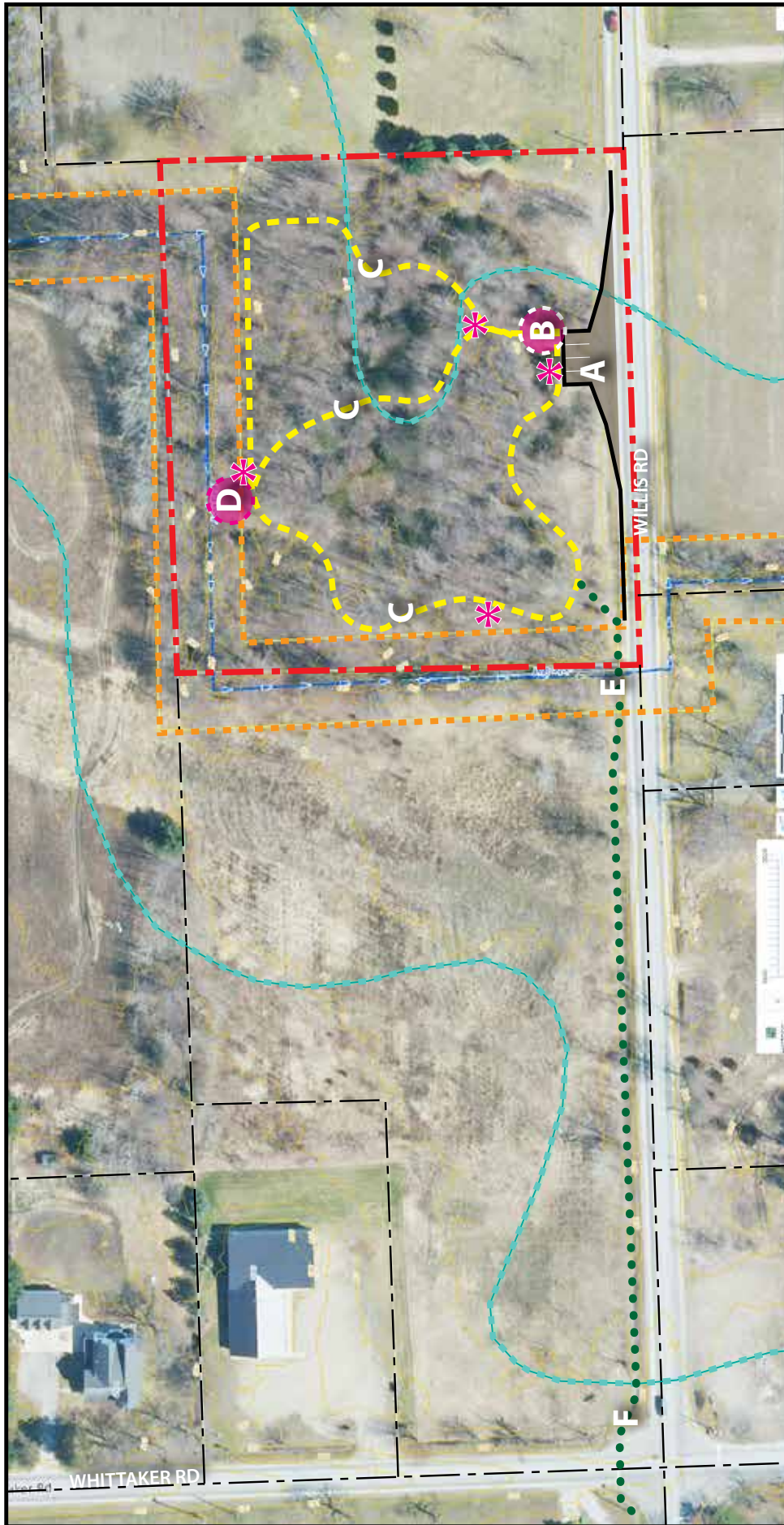


Example: Mown path (left) vs. crushed limestone (right)



Example: Accessible bench layout





Willis Road Preserve Concept Plan

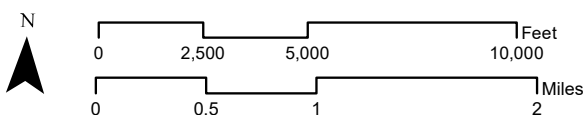
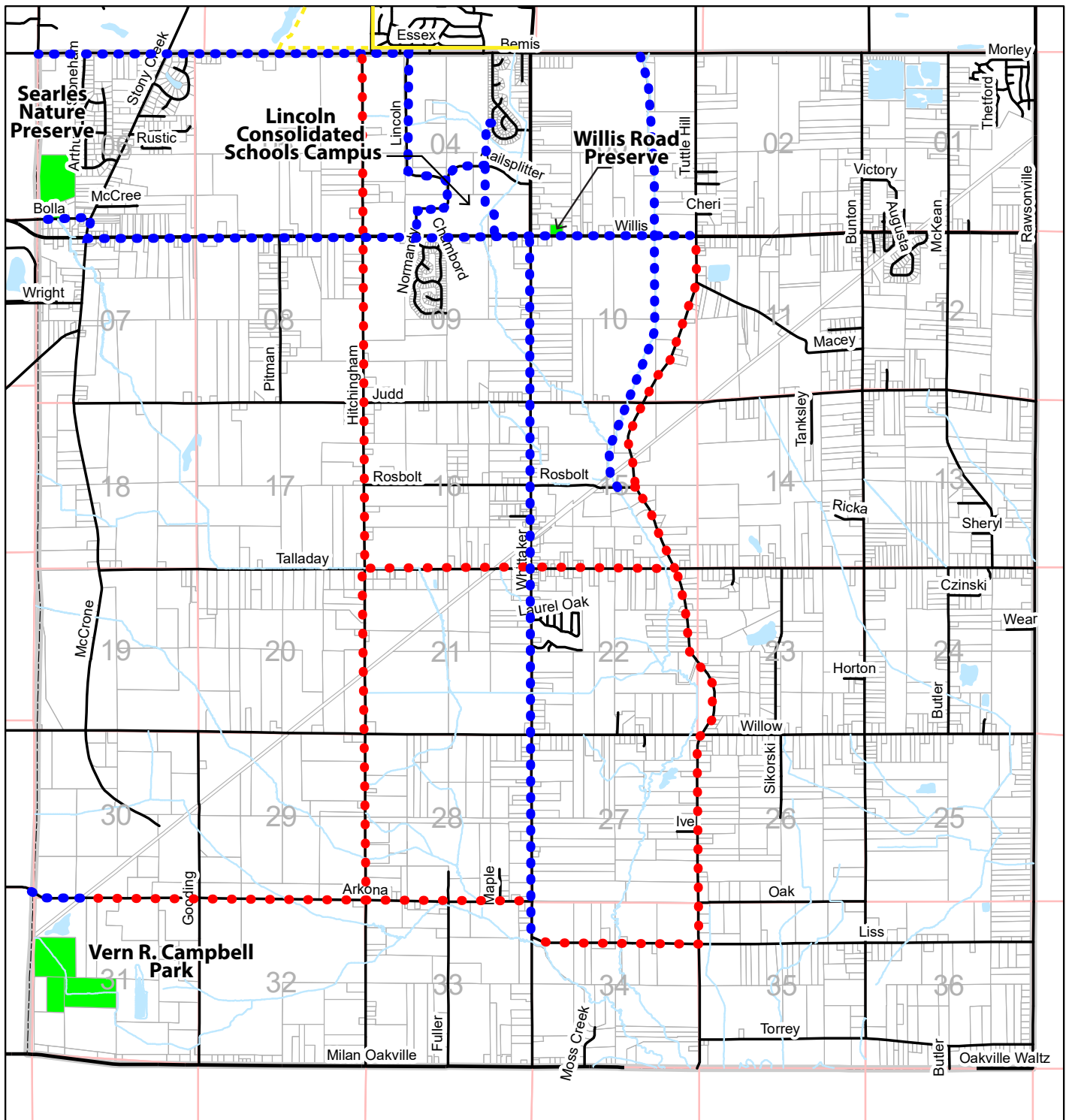
Augusta Charter Township Washtenaw County, Michigan

- A: Gravel parking lot. One space should be paved and marked for accessible parking
- B: Gathering area / informational kiosk
- C: Rustic trails. Short-term plan would include six-foot wide mown paths. Long-term, at least 50% of the pathway would be improved to a crushed limestone surface to accommodate disabled visitors. Actual path alignment would be adjusted based on tree positions and other physical factors, but would remain outside of the County drain easement.

- D: Drain access / overlook. Short term plan includes simple access point for student visitors. Long term plan would include a seating area for outdoor classroom activities.
- E: Future path and drain crossing. The Township must coordinate with the WCVRC for crossing point over drain easement.
- F: Future intersection development. Township should coordinate with the Washtenaw County Road Commission to improve the intersection and allow safe passage to and from the school campus.

KEY

---	Preserve boundary
---	Other parcel boundaries
---	Wetland boundary*
---	County drain boundary**
---	Contours (approximate)
---	Proposed path
...	Future path
*	Bench locations
*	EGLE/State of Michigan regulated wetland boundary
*	Washtenaw County Water Resources (WCWRC) Commission regulated boundary



- Park or preserve
- Proposed off-road path (i.e. paved path or sidewalk)
- Proposed on-road route (i.e. signed route or bike lanes)
- Existing off-road path operated by other community
- - - Proposed off-road path by other community

Non-Motorized Pathway Network Preliminary Concept Plan

NOTE: Shown alignments are preliminary and meant for discussion and future planning purposes only. Any routes or trails developed by the Township will require further evaluation and public input.